



ENGLAND - EAST COAST

BLYTH

ADMIRALTY CHART NO 1626

## NOTICE TO MARINERS NO 03 OF 2016

### *Blyth Tall Ships Event – Commercial Shipping Information.*

#### ***North Sea Regatta Tall Ships Race August 26<sup>th</sup> - 29<sup>th</sup> 2016***

The Port of Blyth will host the North Sea Regatta Tall Ships event Friday 26th August – Monday 29th August.

The aim of the Port of Blyth and the Tall Ship event organizers is to promote safe use of the statutory harbour limits and quaysides for all persons attending the tall ships event whilst keeping the port open for commercial operations and keeping any potential disruption to commercial operations to a minimum through good management procedures.

There will be times during the event when, in the interests of safety, navigation through certain areas of the Port of Blyth's Statutory harbour limits will be heavily restricted or prohibited except with the specific permission of the Harbour Master.

During the evenings of Friday 26<sup>th</sup>, Saturday 27<sup>th</sup> & Sunday 28<sup>th</sup> August 2016 at 2100hrs a pyrotechnic display over the public quaysides will take place which will include a river exclusion zone being imposed from 2000hrs – 2200hrs, commercial shipping movements shall be planned to avoid these times or suspended until the fireworks displays have ceased.

On Monday the 29th of August 2016 the day of the Grand Depart / Parade of Sail, the fleet will un- moor from the public quays and South Harbour between 1230hrs - 1400hrs. During this time all vessels other than those directly involved in the Tall Ships Race shall be prohibited from Navigating within the Blyth Statutory Harbour Limits. Once the fleet has left the port approaches port operations and navigational procedures will recommence as per normal, commercial vessels are advised that small boat owners may follow and view the ships on the open sea and should proceed with due caution / consideration whilst navigating approaching or leaving the area.

Parade of Sail Route (Annex A page 3)

During the event but avoiding race vessel arrivals and departure times all vessel movements will be under the control of the Harbour Master with time of entry and departure influenced by event activities aimed at reducing any potential risk regarding the safety of navigation within the statutory harbour limits.

Vessels with PEC's will be required to take a pilot if navigating the Statutory Harbour Limits during event times (0900hrs- 2300hrs) at no additional charge.

During the hours from 1000hrs – 2000hrs Friday 26<sup>th</sup> – Sunday 28<sup>th</sup> leisure / private craft will be permitted to view the tall ships fleet with specific guidance given on procedures & Directions (Port of Blyth - LNTM 04).

Commercial shipping movements shall proceed with due consideration regarding the significant increase in the small craft numbers anticipated operating within the Harbour Limits during these times.

It in the event of a major incident being declared by the Tall Ships event Silver Command all vessel movements will be suspended by the Harbour Master until directed otherwise.

Harbour and Police craft will be in attendance throughout to ensure compliance with these necessary restrictions and the directions of the Harbour Master.

Please note that significant traffic management systems will be in place across the region with expected delays and grid lock at certain times around Blyth its self. Please co-ordinate any required vessel services, bunkering, crew changes etc with Blyth Port control / Port operations so as to avoid un-necessary delays or obstruction during this period.

Further information can be obtained through the Harbour Masters Office at the Port of Blyth;

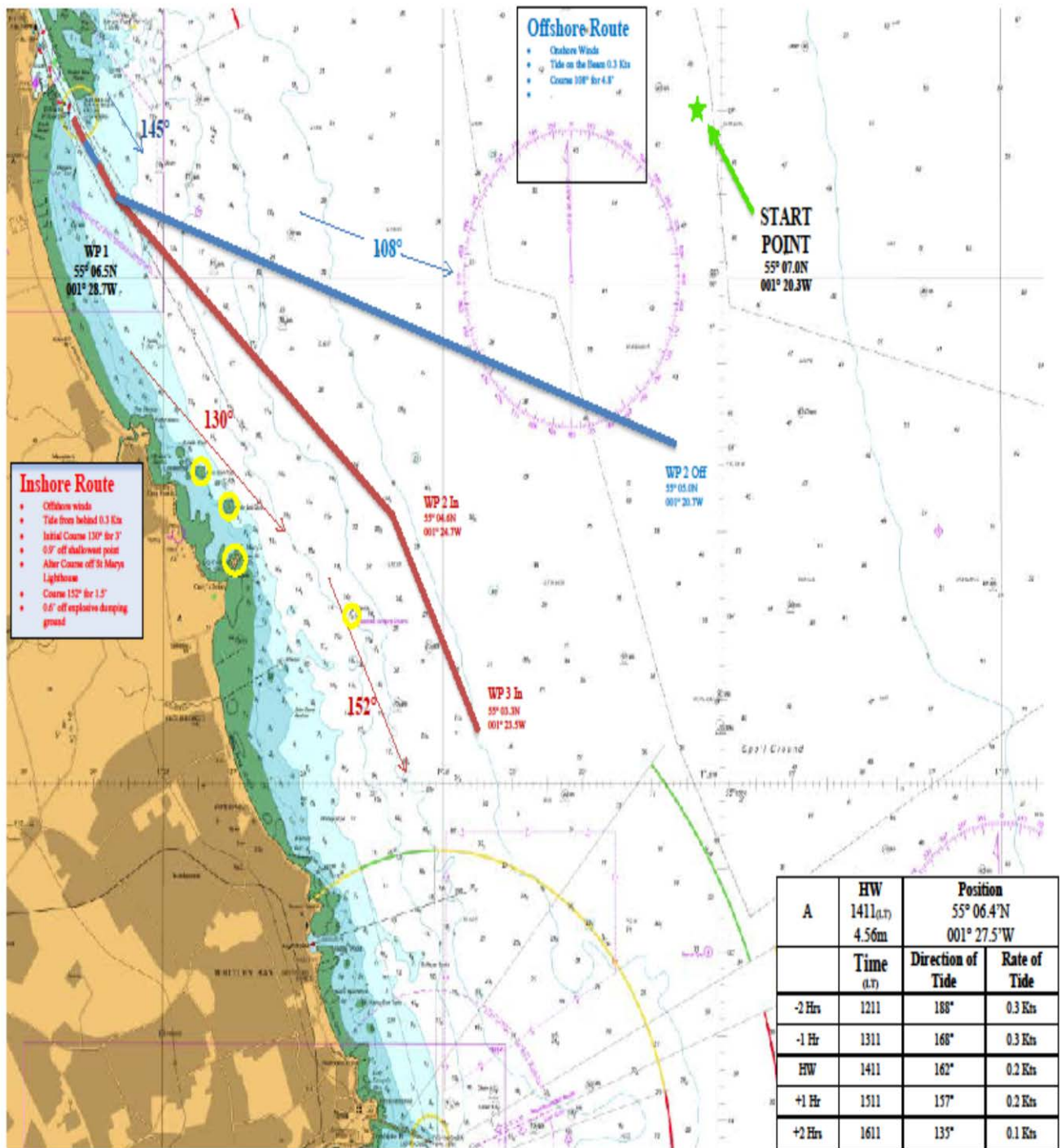
Tel No. 01670 357020

Fax No. 01670 540674

Email – [marine@portofblyth.co.uk](mailto:marine@portofblyth.co.uk)

By Order  
Port of Blyth Harbour Master

# Annex A – Parade of Sail Route



(Not for Navigational use)

MW - 09 /08/2016