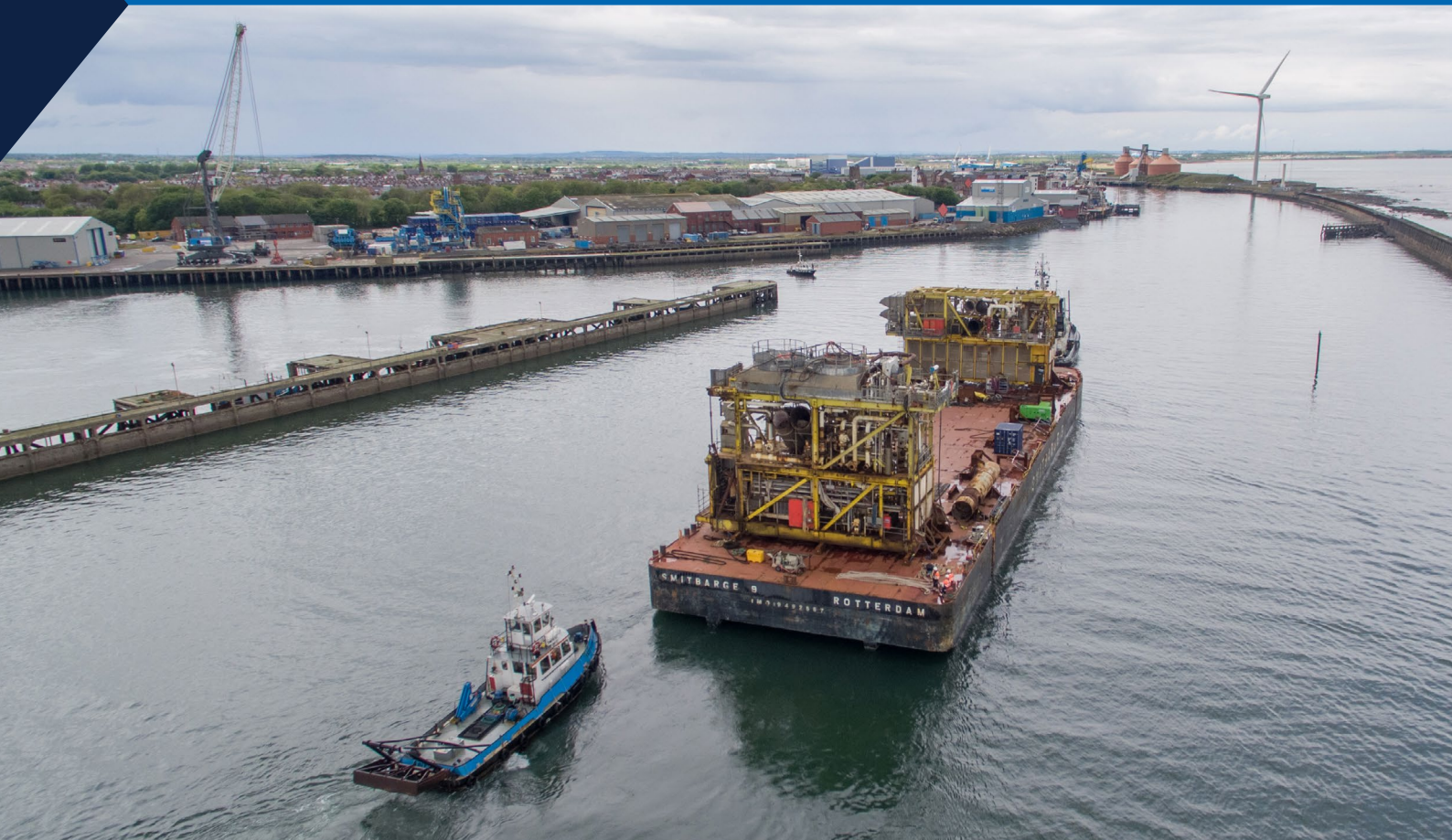




PORT OF BLYTH

# DECOMMISSIONING SUPPORT BASE

PORTOFBLYTH.CO.UK



# DECOMMISSIONING AT PORT OF BLYTH

Benefiting from a strategic location on the east coast of the UK, midway between Aberdeen and Great Yarmouth, Port of Blyth's fully permitted decommissioning facilities are ideally placed to support activity in the North, Central and Southern North Sea.

With a number of major subsea and offshore wind decommissioning projects already completed, activity is set to significantly expand on our dedicated 2.3 hectare decom site.

Licensed for capacity up to 50,000 tonnes per annum, the site features an impermeable heavy duty concrete base and quarantined areas for hazardous waste including NORM. Multiple decommissioning contracts can be handled at the same time due to zoned drainage systems.

This site benefits from direct access to a heavy duty quays up to 10m draft, an adjacent rail link and a range of handling equipment including Port cranes of over 100

tonnes capacity able to assist with both quayside and site operations. Our heavy lift partners also have cranes of up to 400 tonnes capacity and a fleet of SPMTs readily available.

A comprehensive in-house lift planning service can support handling operations provided by fully qualified Port management who work closely with the client from early planning to project completion.

Other Port based third party services including specialist fabrication, vessel coded welding and lifting & rigging services can all be flexibly sourced from our extensive supporting supply chain.



2.3 HECTARE  
DECOM SITE

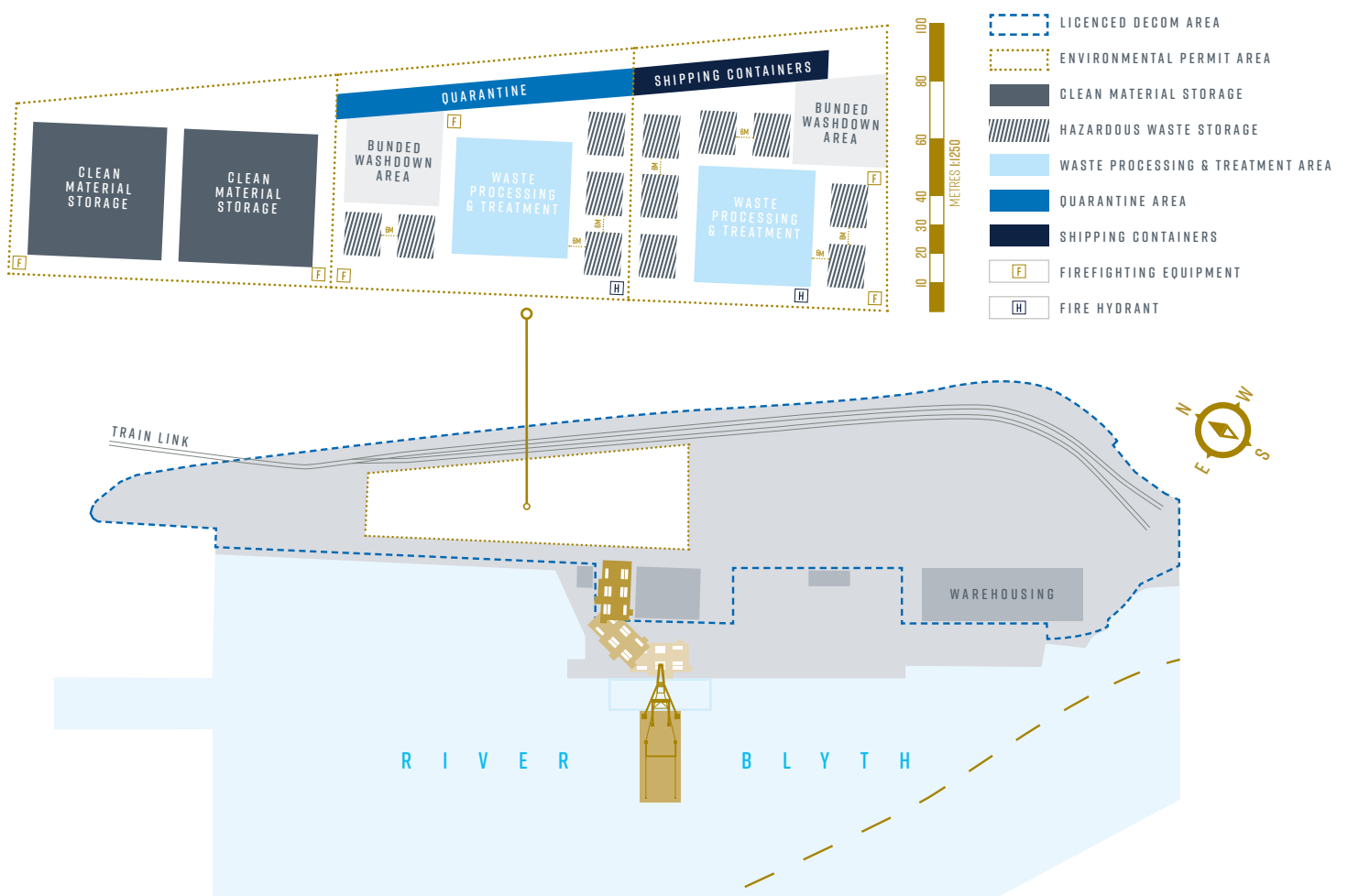
# FULLY PERMITTED DECOMMISSIONING TERMINAL

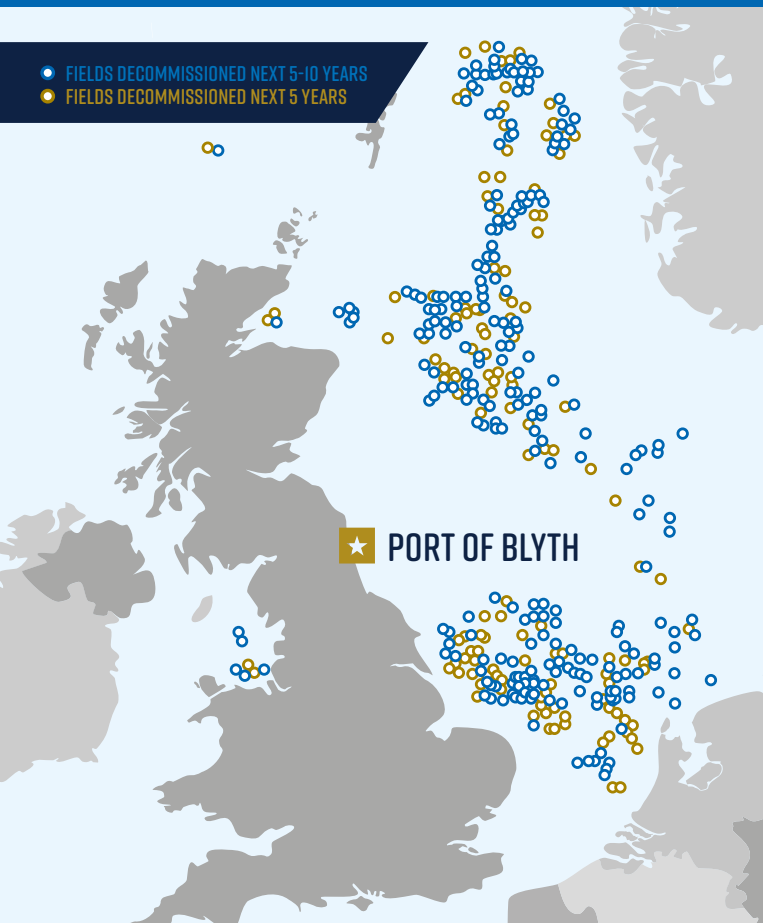
## LOCATION & NAVIGATION

- ★ STRATEGIC NORTH SEA DECOM LOCATION ON THE EAST COAST OF THE UK
- ★ A LEAD UK REGION FOR OFFSHORE ENERGY WITH A WELL-DEVELOPED ENGINEERING SUPPLY CHAIN
- ★ TIDAL DEEP WATER PORT ACCESSIBLE IN VIRTUALLY ALL WEATHER CONDITIONS
- ★ NO LOCKING IN OR OUT AND DIRECT ACCESS TO OPEN SEA
- ★ NO AIR DRAFT RESTRICTIONS
- ★ VESSELS UP TO 220 LOA, 50M BEAM AND 10M DRAFT

## FACILITIES & OPPORTUNITIES

- ★ FULLY PERMITTED 2.3 HECTARE DECOM SITE
- ★ HEAVY LIFT QUAYS TO 10M DRAFT
- ★ ONSITE SPMTS AND HEAVY LIFT CRANE AVAILABILITY
- ★ DIRECT RAIL LINK INTO DECOM SITE
- ★ FURTHER DEVELOPMENT SITES UP TO 35 HECTARES ALSO AVAILABLE
- ★ ENTERPRISE ZONE INCENTIVES AVAILABLE ACROSS MULTIPLE SITES
- ★ 'ENERGY CENTRAL' INITIATIVE SUPPORTING INWARD INVESTMENT





# DELIVERING EXCELLENCE

Port of Blyth has a well established reputation for supporting the energy sector and is a trusted partner of some of the world's leading offshore energy focused companies. Our experience of handling and storing large and complex lifts is extensive, covering onshore and offshore wind turbine components, umbilicals, flow-lines, cables, ROVs, subsea ploughs, A-Frames, carousels and tower lay systems to name but a few.

The Port's main asset is its workforce who have an absolute focus on delivering a first class service to a growing list of valued partners and customers. All stevedores are trained to the highest standards; all holding nationally recognised qualifications delivered by our training division, Port Training Services, one of the leading providers of port related vocational qualifications across the UK. Expert, flexible and safe handling services are therefore assured.

As a result the Port of Blyth (with four major ISPS security compliant terminals) is increasingly seen as one of the UK's leading offshore energy support bases.

These strengths are now being applied to decommissioning activities with sizable projects already completed in relation to offshore wind and subsea structures. Strong relationships are being furthered with asset owners, vessel operators and onshore decommissioning / waste disposal specialists.

With a strong reputation for creating successful partnerships and offering competitive port costs, the Port of Blyth is providing highly attractive solutions to the decom sector.



**PORT OF BLYTH**

South Harbour, Blyth,  
Northumberland NE24 3PB

**Telephone:** 01670 357 000

**Email:** [commercial@portofblyth.co.uk](mailto:commercial@portofblyth.co.uk)

[PORTOFBLYTH.CO.UK](http://PORTOFBLYTH.CO.UK) |  | 