

★ ★ ★ ★ ★  
**PORT OF BLYTH**  
★ ★ ★ ★ ★



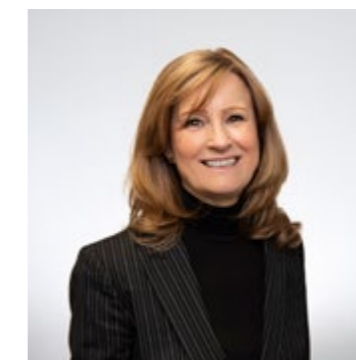
**ANNUAL  
REVIEW  
2023**

# CONTENTS

CHAIR'S STATEMENT	03
CHIEF EXECUTIVE'S REVIEW	04
PORT OVERVIEW & STATUTE	05
CONSTITUTION & BOARD	06
FINANCE	10
PEOPLE & CULTURE	12
ENVIRONMENT & DECARBONISATION	16
PORT OPERATIONS & DEVELOPMENTS	20
FORWARDING & LOGISTICS	22
SAFETY & TRAINING	24
STAKEHOLDERS & THE COMMUNITY	26
ENERGY CENTRAL	28
THE FUTURE	30

★ ★ ★ ★ ★  
**PORT OF BLYTH**

★ ★ ★ ★ ★



**AS I EMBARK ON THIS NEW ROLE, I AM COMMITTED TO CONTRIBUTING TO THE CONTINUED GROWTH AND SUCCESS OF THE ORGANISATION. IN ADDITION, I AM ALSO THRILLED TO ANNOUNCE EXCEPTIONAL GROUP FINANCIAL PERFORMANCE FOR THE THIRD CONSECUTIVE YEAR IN 2023.**

## CHAIR'S STATEMENT

I am both delighted and honoured to be appointed as Chair of Blyth Harbour Commission and as I embark on this new role, I am committed to contributing to the continued growth and success of the organisation. In addition, I am also thrilled to announce exceptional Group financial performance for the third consecutive year in 2023. Our turnover increased again to £31.5 million, which translated into record profitability, with operating profit and profit before tax, increasing to £3.9 million and £3.6 million respectively.

The core Port operating business remains the main contributor to Group performance but is strengthened by our 'turnkey solutions' strategy, providing logistics, forwarding, export packing and training services. Forwarding and logistics subsidiary, Transped, continued to play a key role in this, albeit across a more challenging year, with both turnover and pre-tax profit down at £10.9 million and £0.11 million respectively. Despite this, the business remains profitable and with some operational issues now resolved, a stronger year in 2024 is anticipated.

The record Group financials during 2023, also enabled key investments to go ahead, with an increased capital expenditure of £5.9 million committed to large-scale projects across the Port estate. The major developments during the year included the installation of static cable tanks at Battleship Wharf, the building of an offshore construction base for a key customer, along with continuation of the upgrading of the Battleship Wharf facility. This has involved progression on the creation of a new link to the Northumberland Enterprise Park, with support from the North of Tyne Combined Authority. In addition, the construction of a new warehouse at Bates Clean Energy Terminal commenced toward the end of the year.

Following the rapid growth over recent years, the Port provides increasingly significant economic benefits to the region as a whole

and is a major catalyst for international trade. Furthermore, working with our 'Energy Central' partners in South East Northumberland, we continue to grow the significant cluster of clean energy focused organisations around the Estuary, which has created hundreds of jobs. With the £130 million JDR Cables factory also now under build, and other significant inward investment expected to be attracted over the next few years, the cluster is now becoming internationally significant, and expected to create and support thousands of jobs for Northumberland and the wider region.

As one of the UK's largest Trust Ports, we deliver far more than just economic benefits and continue to focus on maximising the benefits to our diverse range of stakeholders, from the local community to wider regional and national organisations and interest groups. In 2023, we continued to support numerous charities, local schools, groups, initiatives and events, including our Christmas appeal for Blyth Food Bank, particularly important during the current cost of living crisis. With the regionally significant £15 million Energy Central Learning Hub now under build and due to open in September 2024, together with our Energy Central Campus partners, we will play our part in training the clean energy workforce of the future and ensure as many of those jobs as possible remain right here in the region.

Our continued achievements are truly a result of the collaborative efforts of many. Therefore, I would like to conclude by thanking our dedicated staff, fellow Commissioners, partner organisations and wider stakeholders for their ongoing support.

*Catherine Young*

**Catherine Young**  
 Chair



**THE PORT'S REPUTATION FOR EXCEPTIONAL SERVICE, EXPERTISE AND FLEXIBILITY IS ENTIRELY BUILT ON OUR EXCEPTIONAL WORKFORCE WHO HAVE EMBRACED OUR CORE VALUES, WORKING AS "ONE TEAM" AND "GOING ABOVE AND BEYOND" TO DELIVER A "HIGH QUALITY SERVICE".**

## CHIEF EXECUTIVE'S REVIEW

For the main Port operating business, 2023 provided a hattrick of record years, following on from similar milestones in financial performance in 2021 and 2022. Our highest-ever turnover £31.5m, operating profit £3.9m and over 10,000 commercial vessel movements, reflected unprecedented levels of activity delivered successfully by our dedicated workforce.

In particular, our core offshore energy sector business continued to stand out, largely focussed on offshore wind but also with ongoing support for oil and gas projects. Major contracts, mobilising two of the worlds offshore windfarms continued, providing significant vessel and onshore handling activity across the year. Other offshore energy activities ranged from the handling of specialist subsea equipment, heavy project lifts and significant support for the decommissioning sector. This included the decommissioning of the first large oil and gas topsides and jackets handled through the expanding facility at Battleship Wharf.

Difficult economic trading conditions in the short sea unitised market continued to subdue container traffic, although volumes were sufficient to maintain the twice-weekly service operating between the UK and Holland. Port subsidiary, Transped, continued to provide the majority of cargo on this service, with a particular expertise in transporting paper and board products, supported by a range of other goods.

Encouragingly, dry bulk handling increased by over 13% with longstanding alumina, cement and sand trades showing improved throughput, supported by aggregates and grain.

Liquid bulks, however, fell back from a strong 2022, but still provide an important service to

Port users, particularly in the growing offshore energy sector.

Other breakbulk cargoes were primarily RDF (Refuse-Derived Fuel), supported by smaller volumes of logs. Volume was up on 2022, but still affected by the refurbishment of the RDF processing facility, which should now move back towards full production.

In addition to cargo-related income, other revenue streams made an important contribution to overall performance, including property rental from tenants based in the Port. These are largely offshore renewables related, given the nationally significant cluster, which supports the sector around the Blyth Estuary. Together with third-party terminal operations, general conservancy, warehousing storage and training income, this continued to provide additional and consistent revenue, supporting the significant but fluctuating income generated from vessel-related activities.

I mentioned our workforce at the start and would like to do so again in conclusion. The Port's reputation for exceptional service, expertise and flexibility is entirely built on our exceptional workforce, who have embraced our core values, working as "One Team" and "Going Above and Beyond" to deliver a "High Quality Service". I cannot thank them enough for their huge contribution to making 2023 such a successful year."

**Martin Lawlor**  
Chief Executive



## PORT OVERVIEW & STATUTE

**As a statutory trust, Blyth Harbour Commission is responsible for conservancy and safe navigation on the River Blyth and operates for the benefit of all stakeholders, who include our employees, commercial and leisure port users, the local community and the regional and national economy.**

A diverse board of six Commissioners, including the Chief Executive, oversees the strategic development of the Port and its subsidiaries, through bi-monthly meetings with executive management. A number of committees such as those convened for audit and pension scheme purposes, also operate and, together with an Annual Public Meeting, ensure on-going good governance.

Board members are selected for terms of three years with the Chair and Deputy Chair appointed by the Board.

The Port routinely re-invests profits in order to improve the facilities and services offered to all Port users, generating enhanced economic activity and community benefits. As a recognised major UK Trust Port, the Port of Blyth also liaises closely with both regional and national government to ensure that benefits are maximised to stakeholders as a whole.

During 2023, Blyth Harbour Commission (BHC) continued to fulfil these important

duties as well as operating a busy modern commercial port, with four main terminals and associated cargo handling services.

In addition to its main port business, BHC operates a wholly owned subsidiary Transped Ltd providing complementary port-related services. Transped is a well-established international logistics and forwarding company and plays an essential role in attracting trade through the Port.

Although not a separate legal entity, Blyth Harbour Commission also operates a training division, Port Training Services (PTS), offering award winning training provision on a nationwide basis. PTS also provide all in-house training ensuring a highly qualified workforce.

Appointments throughout the business are made adopting Nolan principles and best practice from Trust Port guidance, with candidates chosen for a range of skills to meet the needs of the business at any given time.

# CONSTITUTION & BOARD

## COMMISSIONERS

All appointments are under the Blyth Harbour Revision (Constitution) Order 2004 (“the Order”) which adopts the requirements contained within Ports Good Governance Guidance published by the DFT (March 2018) in respect of the recruitment, selection and Appointment/re-appointment of Commissioners.



**GEOFF HODGSON OBE DL**  
Chair (until 31 December 2023)

Geoff Hodgson spent his early career in sales and marketing roles for multinational companies including Procter and Gamble, Diageo and Coca Cola. He returned to the North East in 1994 to work for Newcastle Breweries, ultimately becoming Chief Executive of the Federation Brewery.

He is currently working as an investor, advisor and mentor with a variety of local companies and has held a number of non-executive Board positions regionally. Geoff is currently involved with the Nigel Wright Group, Blumilk, Trustack and UMI amongst other business interests. He is also deputy chair of the Tyne & Wear Community Foundation and Durham School.

Geoff was appointed a Commissioner in 2012, became Deputy Chair in 2014 and Chair in 2016. Geoff completed his final term on 31 December 2023.



**CATHERINE YOUNG**  
Chair

Catherine Young qualified as a chartered accountant with KPMG before going on to spend time both in practice and industry, including with PwC and Reg Vardy PLC. Catherine has current roles in EdTech and not-for-profit businesses and has previously served in several other non-executive roles. These include as Senior Independent Director and Vice Chair at the North East Ambulance Service, as a Governor at the University of Sunderland and as Chair of Audit Committee at national charity Breast Cancer Care.

Catherine brings her experience in governance, board reporting and accountancy to her role as a Chair.

Catherine was appointed a Commissioner in 2015, Deputy Chair in 2022 and Chair from 1 January 2024.



**PAUL HARDISTY**  
Deputy Chair

Paul has extensive operational and board experience in the Energy and Marine industries having worked for a number of global companies including GE Oil & Gas, Halliburton, Aker Solutions and Royal IHC. During his career, he has spent significant time overseas developing and delivering opportunities which included extended periods in Australia, Norway, USA, Brazil, and the Netherlands. Most recently, Paul was Managing Director of Royal IHC in the UK and the Executive Director of Royal IHC B.V with the responsibility for leading the group’s capital equipment businesses.

Paul was appointed as a Commissioner in 2021, Deputy Chair in 2024 and is Chair of the Audit Committee.



**MARTIN LAWLOR**  
Chief Executive

Martin was appointed Chief Executive by Blyth Harbour Commission in 2006 having previously held the roles of Deputy Chief Executive and Commercial & Operations Director. He also acts as Chair of the commission’s logistics subsidiary Transped.

Under his guidance Port of Blyth has grown its trade and client list significantly and is seen as a key strategic UK offshore energy support base. Now one of the largest ports of its kind in the UK, Blyth is known as an ambitious and customer focused, modern port operation.

Martin is a council member of the British Ports Association having served as Chair between 2018 and 2021, a board director of Port Skills & Safety and chair of regional flagship skills and education initiative, Energy Central Campus and has held positions on a number of regional economic and strategic boards.

Martin was appointed Chief Executive and a Commissioner in 2006.



**RICHARD TURNER**  
Commissioner

Richard Turner is Chief Executive of Geoquip Marine, whilst holding a number of non-executive and advisory positions in the energy sector including the Offshore Wind Growth Partnership (OWGP).

Previously, Richard was Chief Executive of Bel Valves & BEL Engineering, President and CEO of JDR Cables and member of the Offshore Wind Industry Council (OWIC). Prior to JDR, Richard worked for Technip Umbilical Systems, where he was Vice President of Global Manufacturing. Earlier in his career Richard worked in the construction equipment industry with Komatsu and Terex. He has a Mechanical Engineering degree and an MBA from Durham University.

Richard was appointed as a Commissioner in 2021.



## COMMISSIONERS



**LUCY WINSKELL OBE LL**  
Commissioner

Lucy Winskell OBE is His Majesty's Lord-Lieutenant of the County of Tyne and Wear.

Previously Pro Vice-Chancellor (Employability & Partnerships) at Northumbria University, Lucy was a member of the Executive team after transitioning into higher education following a 28-year career as a litigation lawyer.

Lucy's non-executive career has been focused on economic growth and regeneration within the North East. She is the current Chair of the North East Local Enterprise Partnership.

Lucy's regional roles have included Board Member of the North East Regional Investment Fund and North East Access to Finance (both supporting SME growth); non-executive Director of Government Office North East; Chair of the North East Industrial Development Board; Board Member of ING; and Chair of Board, North East Chamber of Commerce.

Lucy is a strong advocate for the region at a national level. As a member of the Arts and Humanities Research Council, she highlighted the importance of the cultural and creative sector in a regional economy and as Vice Chair of the British Chambers of Commerce (BCC) she ensured a regional voice formed part of BCC's lobbying and policy work.

Lucy was appointed as a Commissioner in 2023.



**ANDREW MILLS**  
Commissioner

Andrew is Managing Director of ITS and also holds a number of non-executive and advisory positions. Most relevant to the Port is his Chairmanship role at NOF, a UK wide business development membership organisation, who also owns and operates Energi Coast.

Previously, Andrew was Chief Executive Officer of ITI, a UK wide technology company. Early in his career, Andrew qualified as a chartered engineer with Assystem, a global consultancy, engineering and project management company.

Andrew was appointed as a Commissioner in 2024.

## EXECUTIVE MANAGEMENT



**MARTIN LAWLOR**  
Chief Executive

Martin was appointed Chief Executive by Blyth Harbour Commission in 2006 having previously held the roles of Deputy Chief Executive and Commercial & Operations Director. He also acts as Chair of the commission's logistics subsidiary Transped. Martin is a council member of the British Ports Association having served as Chair between 2018 and 2021, a board director of Port Skills & Safety and chair of regional flagship skills and education initiative, Energy Central Campus and has held positions on a number of regional economic and strategic boards.



**ALAN TODD**  
Port Director

Alan joined the Port in 2004 and as Port Director is responsible for overseeing the Operations and Engineering departments, as well as assisting the Commercial team on new customer opportunities. Having qualified as a Chartered Civil Engineer, Alan previously worked for Volker Stevin as a contracts manager and Corus as a specialist advisor in the construction of quay structures around the world.



**ALASDAIR KERR**  
Commercial Director (from 1 Jan 2024)

Alasdair is an experienced commercial professional, who has worked in the Ports industry for over 20 years. Alasdair has used his breadth of market sector understanding to deliver record business growth and large-scale quayside infrastructure developments. Alasdair joined the Port of Blyth in 2021 and has played a key role in the Port's development, welcoming new customers and driving up revenue for the Port and its subsidiaries.



**EDWIN DICK**  
Harbour Master

Edwin joined the Ports Marine Department in 2009 as a Pilot/Assistant Harbour Master. He served in the role of Deputy Harbour Master for six years before being appointed Harbour Master in 2019. Edwin is a council member of the UK Harbour Masters Association and represents the North constituency. He is also a member of the joint British Ports Association & UK Major Ports Group Marine & Pilotage Steering Committee, Environmental Committee and the Security and Resilience Group.



**ORAN ROBSON**  
Commission Secretary and Finance Director

Oran joined the Port in 2016 and as Commission Secretary and Finance Director is responsible for both Finance and IT operations. Oran qualified as a chartered accountant with Ernst & Young before subsequently holding management positions with a number of listed organisations, including Rolls Royce plc. Oran is also a director of both Transped and Energy Central Campus, as well as member of the British Ports Association's Finance Group. In addition, he is a Fellow of the Institute of Chartered Accountants.

## PRINCIPAL OFFICERS

★ **M LAWLOR B.A.**  
Chief Executive

★ **A S TODD C.ENG. MICE**  
Port Director

★ **E J DICK**  
Harbour Master

★ **A KERR B.SC.**  
Commercial Director

★ **O K H ROBSON B.SC. FCA**  
Commission Secretary and Finance Director

# FINANCE

The Port had an exceptional year in terms of group financial performance in 2023, achieving a record turnover and a substantial increase in operating profit. Both the Port and its subsidiary Transped delivered outstanding results once again.

GROUP PERFORMANCE INDICATORS	2023	2022	2021	2020	2019
Turnover (£'000s)	31,521	30,413	25,517	21,992	21,676
EBITDA (£'000s)	7,114	6,426	4,601	3,374	2,581
Operating profit (£'000s)	3,883	3,670	2,132	1,298	634
Adjusted operating profit (£'000s)*	2,782	3,852	2,342	1,513	846
Profit before taxation (£'000s)	3,567	3,318	1,807	948	227
Adjusted profit before taxation (£'000s)*	2,466	3,500	2,017	1,163	439

PORT PERFORMANCE INDICATORS	2023	2022	2021	2020	2019
Turnover (£'000s)	21,548	19,190	14,939	11,924	11,392
Operating profit (£'000s)	3,725	3,285	1,624	1,035	306
Adjusted operating profit (£'000s)*	2,624	3,467	1,834	1,250	518
Profit before taxation (£'000s)	3,427	3,208	1,578	841	105
Adjusted profit before taxation (£'000s)*	2,326	3,390	1,788	1,056	317
Total throughput inc road / rail (tonnes)	553,000	607,000	700,000	649,000	959,000
Total throughput seaborne only (tonnes)	551,000	577,000	652,000	502,000	617,000
Customer service feedback (scale 1 to 10)	9.0	9.0	9.1	9.3	9.1
RIDDOR accident statistics (per 100 workers)	0.0	0.8	0.0	0.9	0.9

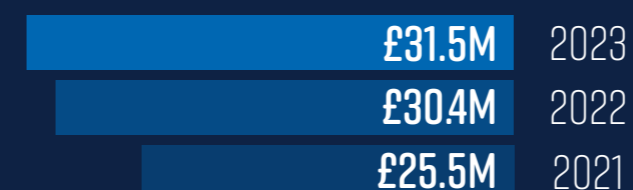
The above data is extracted from the Annual Report and Financial Statements approved by the Commissioners and upon which the auditors have provided an unqualified audit opinion for the years shown.

\* Adjusted operating profit and adjusted profit before taxation are operating profit and profit before taxation excluding the impact of current and past service pension costs. As this is a non cash impact, which can be volatile from year to year, the Commissioners believe its exclusion presents a fairer presentation of performance.

# 2023 AT A GLANCE

3.6% INCREASE ON 2022

TURNOVER OF **£31.5M**



## REDUCTION IN CARBON EMISSIONS

GENERATED FROM PORT ACTIVITIES COMPARED TO 2022

METRIC TONNES REDUCED



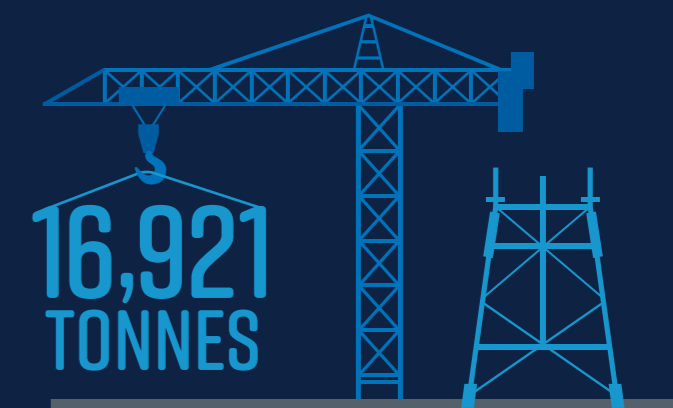
**78** 2022 **30** 2021 **26**

PORT OPERATIVE APPRENTICES TRAINED IN 2023

AT PORTS AROUND THE UK



BASED IN THE PORT OF BLYTH LINKED TO THE CLEAN ENERGY SECTOR



OF MATERIAL DELIVERED FOR DECOMMISSIONING

# PEOPLE & CULTURE

## MISSION VISION AND VALUES

How we do things is just as important as what we do. Our values reflect the important shared attitudes, beliefs, and behaviours that everyone working at the Port of Blyth is expected to demonstrate. Having clear and widely understood values shape not only how we do business with each other, but also our suppliers and customers.

## VALUES IN ACTION SURVEY

Following the introduction of the Port's Mission, Vision and Values in January 2023, the Port circulated a 'Values in Action' Survey to achieve clarity on what living the Port of Blyth values means for individuals working at the Port of Blyth and what is required to see them in action every day.

Following the measurement of where we are now in terms of living our company values, we then wanted to look at what is required to further embed each value into everyday life at the Port. Several key themes were highlighted during the analysis of these results. We then rolled out some initiatives relating to each of the key themes and have recently circulated another survey to measure progress and create an action plan for 2024.



## PEOPLE

Our people are our most valuable assets. We strive to recruit and retain the right people, valuing continuous development by providing staff with opportunities to grow both personally and professionally. The celebration of our longest-serving employee of 50 years in 2023 is a testament to this. David Innes started his career at the Port as a Messenger in the 1970's and left 50 years later as a Marine Supervisor.

We are also empowering and encouraging everyone who works for Port of Blyth to find improvements to our business that deliver the best results for our customers, community, and staff via our recently relaunched suggestion scheme.

★  
CELEBRATING  
50 YEARS  
OF SERVICE



"I had several opportunities to work elsewhere but I had no reason to leave. Working at the Port of Blyth has never felt like a job or a chore. I've grown up in the Port and I'm grateful that I can continue doing something I love until I decide to fully retire."

David Innes  
Marine Supervisor



### OUR MISSION

TO PROVIDE AN EXCEPTIONAL SERVICE TO ALL OUR STAKEHOLDERS, MAXIMISING BOTH ECONOMIC AND SOCIAL VALUE.



### OUR VISION

TO BE WIDELY RECOGNISED AS A NATIONALLY SIGNIFICANT AND SUCCESSFUL TRUST PORT, AT THE FOREFRONT OF SUPPORTING THE OFFSHORE RENEWABLE ENERGY SECTOR.



### OUR VALUES



A SAFE ENVIRONMENT FOR ALL



BUILT ON TRUST



DELIVERING A HIGH QUALITY SERVICE



WORKING AS ONE TEAM



GOING ABOVE AND BEYOND

85%

of people said they are to some extent confident they understand the company's Mission, Vision and Values overall

7.1/10

On average, employees rated the extent to which they agreed that the Port values were reflective of working at the Port of Blyth as 7.1/10

## HEALTH & WELLBEING

In 2023, based on feedback from the Values in Action Survey, we launched a new and improved staff Health and Wellbeing programme. This included training 10 individuals from across the workforce, who are passionate about health and wellbeing in the workplace, to become dedicated Health Advocates. Together, we are now working towards achieving the Better Health at Work Award in 2024.

The team circulated a Health Needs Assessment to the workforce to determine which areas of Health and Wellbeing were of most interest to staff and based on the results, agreed on three main campaigns: Stress and work-life balance, physical activity, and mental health. A series of initiatives relating to these campaigns have already been introduced, including a sponsored cycle in partnership with the local gym, free fruit weekly, staff well-being breakfasts and Mental Health training, with great feedback received from the workforce and many more initiatives in the pipeline for 2024.



# ENVIRONMENT & DECARBONISATION



## ENVIRONMENT

### GREEN TRADE

The Port of Blyth is a key player in the offshore energy sector, supporting the construction of major UK offshore wind farms and housing a strong network of companies involved in advancing the energy transition. Additionally, the state-of-the-art testing facilities provided by the ORE Catapult, further enhance the Blyth Estuary's position in propelling the advancement of the green energy revolution.

### MARINE CONSERVATION

As the Statutory Harbour Authority responsible for commercial and recreational activity within Blyth Harbour, Port of Blyth takes its environmental responsibilities very seriously.

The Port works closely with a variety of environmental bodies such as the Environment Agency and Natural England, to ensure environmental best practice is maintained and compliant with all relevant environmental legislation. The Port also plays a critical role in managing and safeguarding several important habitat designations, including a marine conservation zone, site of special scientific interest, and special protection areas for marine and coastal environments.

In 2023, the Port continued its relationship with Groundwork to install a further 18 vertipools (artificial rock pools) on the East Pier. In May 2023, the Port also collaborated with Groundwork on a pioneering initiative to install 57 vertically hanging artificial 'Shelter Shells', under Commissioners Quay. The Shelter Shells attract plant and animal life to live, feed and rest to improve biodiversity and water quality in the estuary. By working together with partners to create artificial intertidal and estuarine habitats here in Blyth, the Port hopes to encourage the return of marine life and improve biodiversity and water quality, especially in waterways like this that have been impacted upon by years of industrial use.

The joint partnership with Journey Blue and North Sea Rejects also flourished in 2023, supplying fishermen with access to a free fishnet waste disposal facility, located at South Harbour to try and eliminate fishing net pollution.



Journey Blue



Shelter shells

## ENVIRONMENTAL POLICY AND ACCREDITATION

After successfully obtaining the ISO 14001 accreditation in 2022, the Port embarked on further environmental enhancements in 2023. In line with this, our Environmental Policy places emphasis on air quality, port emissions, energy efficiency, and the implementation of renewable energy initiatives.

## ISO 14001

Environmental management systems certification maintained and strengthened through continual improvement



# ENVIRONMENT & DECARBONISATION

## DECARBONISATION

Considerable progress has been made in delivering more sustainable Port operations, but we recognise that we need to do more to support the UK's clean energy transition.

To track our progress towards net zero, the Port measures its emissions with the aim of being carbon neutral by 2040.

### Scoping our emissions



#### SCOPE 1

Scope 1 (direct) emissions produced on-site by fossil fuel combustion, mainly by cranes, internal movement vehicles/plant (including marine pilot boats) and gas/oil heating systems.



#### SCOPE 2

Scope 2 (indirect) emissions embedded within the energy the Port consumes that are not generated on-site. Indirect emissions are typically associated with electricity used to power buildings, workshops, quayside cranes, warehouses and electric plant and fleet vehicles.

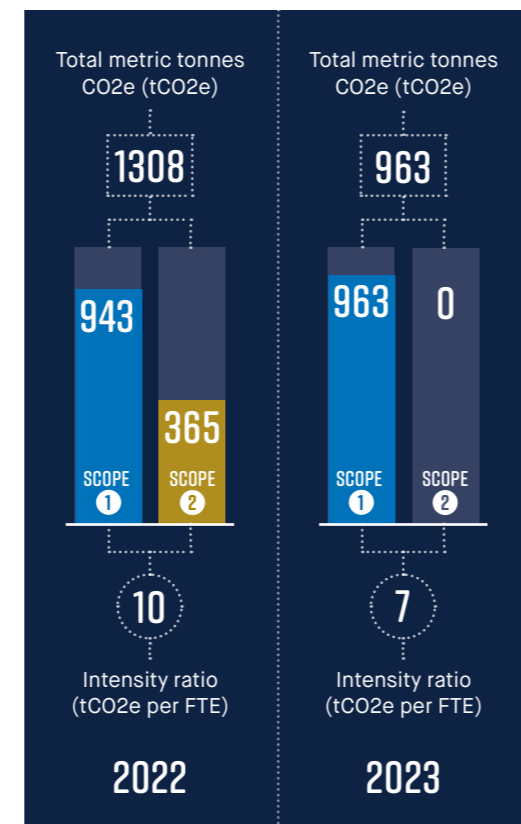


#### SCOPE 3

Scope 3 (other indirect) emissions include transport by third parties, such as logistics and distribution companies, (including Transped) employees undertaking business and commuting travel and waste collection and processing data.

### LIMITATIONS

Scope 3 emissions are difficult to calculate as they include emissions from an organisation's entire supply chain for goods and services. Where this data is reasonably accessible it is being collected but not yet reported publicly. The Port is part of a British Ports Association steering group, which is seeking to standardize methodology for calculating Scope 3 emissions and therefore, extended reporting may become feasible in the future.



Overall, there has been a reduction of 26.4% in carbon emissions generated from Port activities in 2023.

This is a result of:

- The electrification of Port plant and vehicles, with the purchase of electric forklift trucks, vans, and installation of additional charging points.
- The positive impact of the installation of solar panels across the Port's terminals
- Replacing LED lighting and upgrading gas oil burning heating systems to energy efficient gas boilers within Port offices and warehousing
- Ethical purchasing of 100% green energy electricity tariff for 2023

**26.4%**  
reduction in carbon emissions generated from Port activity

### Over the next 12 months, we are focused on:



#### ALTERNATIVE FUEL SOLUTIONS

Working with a range of partners, the Port continues to explore a number of alternative vessel and plant fuel solutions all linked to the decarbonisation agenda, which offer significant future opportunities to decarbonise the world's fleets of commercial vessels. These include current lower-carbon alternatives to marine gas oil and innovations such as green hydrogen, and hydrogen fuel for larger plant.



#### INCREASED USAGE OF SOLAR POWER PV PANELS

Potential to increase solar power PV panels onto newly constructed or refurbished buildings across the Port estate wherever feasible.



#### THE ELECTRIFICATION REPLACEMENT SCHEME

The electrification replacement scheme, with the commitment of additional purchases over the Port's 10-year development strategy, will see all plant and vehicles fully electric, hybrid or operating on alternative fuels by 2040.



#### NET ZERO GOAL FOR 2040

Awareness raising initiatives and programmes of the Ports decarbonisation agenda and goal of net zero for 2040 across the workforce.

# PORT OPERATIONS & DEVELOPMENTS

2023 proved another extremely busy year for operations in the Port of Blyth, handling a diverse range of vessels and cargo types. Marine and landside operational staff worked together to ensure that a high level of service was maintained across the year, achieving a number of significant milestones along the way.

## OFFSHORE ENERGY

As a leading UK offshore energy hub, the Port played a crucial role in facilitating the development of some of the largest offshore wind farms globally. Throughout the year, the construction of the **Neart na Gaoithe** offshore wind farm situated along the east coast of Scotland was supported, with a total of 159 vessel visits, averaging three per week. The operations team expertly managed numerous lifts weighing up to 290 tonnes and exceeding 50 meters in length, utilising heavy lift cranes and SPMTs.

The Port also concluded its support as the cable storage and mobilisation base for the **Seagreen** offshore wind farm. Overall, the Port stored and spooled 12,000 tonnes of inter-array cable using purpose built static tanks designed and constructed by Port of Blyth's in-house technical team. The static storage tank concept was proven during this project and has now led to the award of further major contracts for offshore windfarm cable marshalling in 2024.

The Port operations team also demonstrated their value added service to support Baker Hughes, with a complex project delivering

4000 tonnes of flowline from Newcastle to Blyth for the **BP Cypre** project in Trinidad. This turnkey solution consisted of the design and engineering of dedicated baskets, the chartering and mobilisation of a barge ready for spooling at Baker Hughes' manufacturing facility, as well as the unloading and storage of the cable and baskets back at the Port of Blyth before loadout. The successful completion of the project was made possible through collaboration with various partners within the supply chain around the Blyth Estuary, ensuring a smooth execution of the project.

## SEAGREEN OFFSHORE WIND FARM

**12,000**  
tonnes of inter-array cable stored and spooled using purpose built static tanks

## BP CYPRE PROJECT

**4,000**  
tonnes of flowline delivered

"It's been a pleasure working with the Port of Blyth throughout this project. Blyth is one of the best Ports in the UK that I've ever worked in, and I have worked in many! The Port of Blyth are flexible and supportive of our last-minute requirements, which can be a daily occurrence on a project of this scale. The Port staff's can-do attitude ensured the project ran seamlessly."

Morag Horne, Marine Logistic Coordinator  
Saipem

## DECOMMISSIONING

It was a significant year for decommissioning as the Port welcomed the largest oil and gas decommissioning project to date into its Battleship Wharf based decommissioning facility, operated in partnership with Thompsons of Prudhoe. Working together, several topsides and jackets for three North Sea offshore oil and gas platforms were delivered to the Port in August. With a combined weight of around 7,000 tonnes, the delivery showcased the Port of Blyth's advanced handling capabilities, which required exceptional planning and a well-coordinated operation. The Port of Blyth and Thompson of Prudhoe were awarded an award for excellence from Heerema for completing the project on time, safely and to the satisfaction of everyone involved.

During the year the Port also handled a significant amount of subsea material for decommissioning totalling 24 vessel calls and 10,000 tonnes of material. The Port operations team have now established a close working relationship with Thompson of Prudhoe and vessel operators to allow this work to be undertaken, with good feedback received from all parties.

**7,000**  
tonnes of oil and gas platform materials decommissioned during one project

**10,000**  
tonnes of subsea material decommissioned over 24 vessel calls



## KEY PORT DEVELOPMENTS

### ★ SOFIA OFFSHORE WIND FARM CONSTRUCTION BASE ESTABLISHED

★ OPERATIONAL IN 2023

RWE's construction base for the Sofia offshore wind farm has been established, featuring newly built offices and car parking facilities. These offices, capable of accommodating up to 50 offshore engineers, have been constructed on Bates Clean Energy Terminal, close to the recently renovated Bates Quay, which will be utilised during 2024, when their Construction Support Vessel is scheduled to commence operations.

### → CONSTRUCTION OF NEW WAREHOUSE COMMENCED

→ COMPLETING EARLY 2024

Construction commenced in 2023 for a new warehouse spanning 2,500 m<sup>2</sup>, replacing D shed, which had been acquired by the Offshore Renewable Energy Catapult. The completion of construction is expected in early 2024, bringing additional modern warehousing facilities to Bates Clean Energy Terminal.

### ★ SOLAR PANEL INSTALLATION

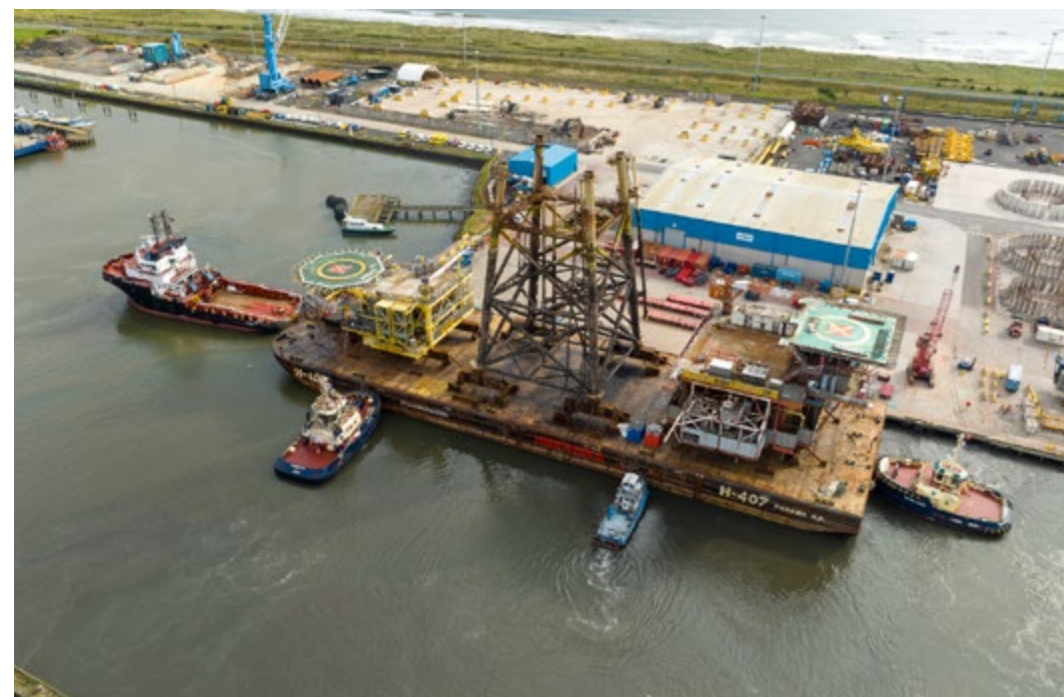
★ COMPLETED MAY 2023

A total of 1,267 solar panels, each with a capacity of 540 watts, have been successfully installed across South Harbour and Bates Clean Energy Terminal. These panels are currently generating an estimated output of around 640,000 kilowatt-hours per year following completion of the installation process at the end of May 2023.

### ★ HARDSTANDING AREA INSTALLATION

★ COMPLETED MAY 2023

Substantial new hardstanding areas have also been installed at Battleship Wharf and Bates Clean Energy Terminals to support upcoming projects, with a particular emphasis on improving roads and footpaths carried out consistently over the course of the year.



# PORT OPERATIONS & DEVELOPMENTS

## MARINE



Our Pilot, Graham Peach featured in a national campaign for Lloyds Bank, celebrating businesses around the UK.



Red dawn return for Blyth Pilot by Ian Daniels taken as part of the Port of Blyth Annual Community Photography Competition

## VESSEL MOVEMENTS

As with the rest of the Port, the Marine Department proved extremely busy, with a record number of commercial vessel movements combining with exceptional levels of pilotage acts. Despite this, the usual high quality and efficient 24/7/365 service was maintained by the department, essential to ensure safe navigation on the River Blyth. Deadweight tonnage of vessels visiting the Port was also close to record levels, re-emphasising the trend of larger vessels being involved in major projects and mobilisations.

### 1,006

**COMMERCIAL VESSEL MOVEMENTS**

A new record high for the Port

### 2.74M

**DEADWEIGHT TONNAGE**

Exceeded 2M DWT for the fourth consecutive year

### 1,043

**COMBINED PILOTAGE AND PEC ACTS**

Exceeding 1,000 acts for only the second time on record

## COMPLIANCE

The Port remained compliant with the Port Marine Safety Code (PMSC), with an internal audit of the 'Marine Safety Management System' undertaken by the Port's HR & Safety Manager who acts as the 'Designated Person', reporting to the Board of Commissioners, 'Duty Holder' under the Code.

The Port also remains compliant with the International Ship and Port Facility Security Code, ensuring that all Port operations are carried out in a secure environment in line with national legislation.

A major Port Emergency exercise was also undertaken in 2023, to help strengthen and develop the Port's emergency plans ensuring a robust response to emergency situations.

## DREDGING & CONSERVANCY

376,000 tonnes of dredged material was removed during 2023 and deposited in the strictly controlled disposal ground off the Port, which remains licensed by the Marine Management Organisation until May 2025.

In 2023, the Port's main lead lights were replaced by a sector light to improve the safety of navigation. This has been well received from a range of Port users.

Trinity House also conducted its annual inspection of Aids to Navigation in November, with no defects recorded and therefore the Port remains compliant as a Local Lighthouse Authority.

One minor marine pollution incident was recorded during 2023, with the Oil Spill Contingency Plan immediately activated. A small quantity of Marine Diesel Oil was quickly contained and cleaned up, with no lasting environmental impact.

376,000

tonnes of dredged material was removed

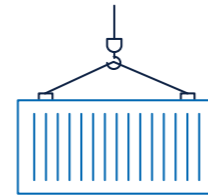
# FORWARDING & LOGISTICS

As part of the Port's strategy to offer customers an all-encompassing service, international logistics and forwarding subsidiary, Transped, continued to provide a high-quality, door-to-door worldwide service to its growing customer base throughout 2023.



## CONTAINER SERVICE

Transped's key focus remained on maintaining the twice-weekly container service between the Ports of Moerdijk and Blyth, operated by valued partner, A2B-Online. Despite ongoing difficult global economic trading conditions, the service continued to operate successfully throughout the year, with the majority of loads being provided by Transped, who act as the UK agent for the line. In particular, Transped's ability to handle large, heavy products in super high cube containers, helped to attract and maintain customers requiring such value-added services. Main customers continued to be focused on the board, paper and tissue sectors, where Transped and the Port of Blyth have had a long-standing track record, supported by other consumer products such as soft drinks.



# 9,000

TEU containers handled in 2023 averaging 173 a week

## WAREHOUSING & LOGISTICS

Another particular strength is Transped's access to large areas of high-quality, secure, on-Port warehousing, and this allowed customers to hold strategic stock and deliver on a just-in-time basis to receivers all across the UK. In addition, a skilled workforce operating electric forklifts and other specialist equipment, such as pressure sensitive clamps, ensured cargo remained in good condition. The use of a short sea service moving goods close to the end destination, coupled with investments in electric plant and energy efficient lighting, also ensured that all door-to-door movements were handled not only cost-effectively, but also with a significantly lower carbon footprint than direct road trailer alternatives.

Improvements to Transped's haulage network across 2023, both on the Continent and in the UK, also ensured that a competitive and efficient service could be maintained for all customers.

## PROJECT FORWARDING

Also, part of the Group One-Stop-Shop philosophy is Transped's project forwarding division, which went from strength to strength in 2023. Offering global out-of-gauge and specialized cargo transport services, its trade expanded across the year, servicing customers based within the Port of Blyth and further afield. Furthermore, the associated, long-standing, export packing business continued to grow and plans to expand the production facility were finalised towards the end of the year. This will hopefully enhance services offered to existing and new customers from 2024 and beyond.



# SAFETY & TRAINING

## HEALTH AND SAFETY

In 2023, the Port of Blyth continued its commitment to safeguarding the health, safety, and well-being of its employees, customers, and the local community, creating a 'safe environment for all'. This commitment was exemplified by the zero lost time injuries reported in 2023, which compares favourably with national benchmarks.

Throughout the year, the Port diligently monitored "leading indicators" that focus on identifying potential risks of injury and near misses, rather than solely relying on incidents of actual injuries and lost time. These indicators encompassed various aspects, such as the proper utilisation of personal protective equipment, safe driving practices, equipment damage prevention, and general hazard identification. This proactive approach allowed the Port to take preventive measures before any injuries could occur.

In 2023, in an effort to improve safety culture, the Port introduced a new digital platform, which aims to enhance employee morale and improve overall productivity by giving staff the tools and know-how to stay safe on the job. This helps to minimize the risk of accidents and injuries by establishing proper safety protocols, providing necessary training, and maintaining equipment and infrastructure.



The effectiveness of this can be seen as the digital platform has enhanced accessibility for operational staff, resulting in a higher number of recorded leading indicator observations.

The Port successfully maintained its Health & Safety certification to ISO 45001, further solidifying its reputation as one of the safest ports in the United Kingdom.



## ISO 45001

Health & Safety certification maintained and strengthened through continual improvement

## TRAINING

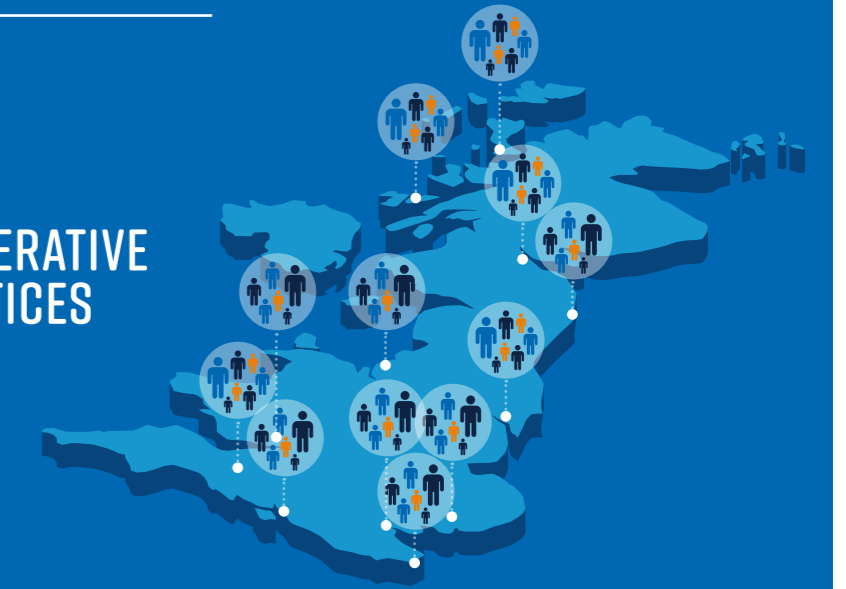
PTS, the training division of the Port of Blyth, have had another busy year. Operating across multiple sectors from heavy industrial, offshore renewables and the port sector, delivering a multitude of products and services to ensure our delegates receive the knowledge, training and skills for them to operate safely and competently.

Port Training Services' continued to grow their Apprenticeship Program as the leading provider of the Port Operative apprenticeship in the UK, with apprentices located across the country. In addition, PTS played a key role in ensuring that ports and future operatives have the necessary resources for training and development in order to shape the future workforce of the port industry.

By introducing externally accredited qualifications to the Port of Blyth's own workforce, the standard of operational expertise has advanced still further. This has allowed the Port to undertake more technical project cargo operations, thereby contributing significantly to its position as one of the leading offshore energy hubs in the UK.

# 78

## PORT OPERATIVE APPRENTICES TRAINED



In terms of commercial training, PTS welcomed The Wind Academy and GEV Windpower to their Wind Turbine Training Facility at Bates Clean Energy Terminal. The Wind Academy aims to provide training in the GWO Basic Safety Training standard, as well as offering Skills Bootcamps to enhance the skills of both employed and unemployed individuals, enabling them to enter the offshore wind sector. In addition, GEV Windpower, a renowned global blade repair and inspection company, will utilise the facilities at PTS to train and assess the competence of individuals who will be working on wind farms worldwide.

Furthermore, PTS has obtained full accreditation to deliver the GWO slinger signaller qualification at their training base, located at the Port of Blyth. This accreditation maximizes PTS's expertise in handling and lifting complex equipment related to the wind industry, a crucial requirement for operators in the offshore wind sector.



# STAKEHOLDERS & THE COMMUNITY

The Port of Blyth, as one of the largest Trust Ports in the UK, has a strong focus on maximizing engagement with its diverse range of stakeholders, which include all employees, Port users, national and regional government, the local community and a host of other related interest groups. Various activities such as Annual Public Meetings, Residents Forums, Port User Meetings, business forums, and social media communication are used to engage as effectively as possible and ensure all interests are understood and considered.



2023 Community Photography Competition Winner - Cambois Colours by Ron Dobson

## ENGAGING THE COMMUNITY

The Community Photograph Competition is a particularly popular form of engagement and continues to attract a large number of entries, with Ron Dobson winning in 2023 with his submission, Cambois Colours.

In 2023, the Port of Blyth also demonstrated its commitment to the community by contributing to a range of local projects and organizations through its community sponsorship program. The program aims to enhance local health and well-being, preserve maritime heritage, support community development, and promote sustainability initiatives.



## SPONSORING BLYTH SPARTANS

The Port continued its support for Blyth Spartans, sponsoring the club's main stand as well as supporting grassroots football activities including junior participation and youth development.

## SUPPORTING LOCAL CAUSES

A wide range of local good causes were supported including:

### Blyth Town Council

The Port supported Blyth Town Council again, with a range of summer events for the community, including sponsorship of Blyth Live, which attracted over 15,000 visitors to Blyth Beach.

### Blyth Stroke Support Group

Blyth Stroke Support Group utilised the donation to cover various expenses, such as venue costs, insurance fees, fuel expenses, as well as fees for speakers and instructors. This financial support has greatly assisted the group in maintaining its invaluable services to the community.

### The RNLI

The RNLI received a donation to support their annual car wash event. The funds raised will enable them to continue their life-saving operations and provide ongoing support to their committed crew.

### The Dialogue Society

The Dialogue Society organised an all-encompassing Christmas gathering in Blyth. This event aimed to commemorate the spirit of Christmas by fostering relationships among the varied members and cultures within Blyth's community.

### Bebside Horses

Bebside Horses received support to help promote the emotional, physical and psychological well-being of children and young people in Blyth and surrounding villages through horses. The donation went towards additional equipment to enable the group to continue supporting children and young people at a reduced financial cost.



Dialogue Society

### Blyth Rugby Club

The donation to Blyth Rugby Club helped with the purchase of new strips for the upcoming season boosting team morale among the Veterans team.

### Blyth Food Bank

The Port of Blyth provided significant support to Blyth Food Bank to assist families and individuals in need within the community during the Port's Christmas appeal. By rallying its staff, customers, and suppliers, the Port successfully raised £2,920 for the Blyth Food Bank. In addition to the monetary contribution, Port of Blyth employees volunteered their time to organise donations and pack food parcels. They also participated in a charity cycle event in collaboration with Puregym Blyth, where staff members cycled 48 miles to raise funds.



"We are extremely grateful to the Port for their support and to everyone who contributed to the appeal, your donations allow us to continue to deliver our vital food parcel service to those in need in the community."

Yvonne Tracey  
Blyth Food Bank

15,000+  
visitors to the area during  
Port sponsored event  
'Blyth Live'

# ENERGY CENTRAL



Blyth is home to the influential Energy Central partnership, which includes the Port of Blyth alongside Northumberland County Council, Advance Northumberland and the Offshore Renewable Energy Catapult.

Energy Central is the UK's unique Port-based service, investment and growth cluster for companies operating in the offshore energy, subsea, decommissioning, battery manufacturing and renewable energy markets.



JDR CABLES

## £130M

subsea cable manufacturing facility due 2025

Over 100 hectares of land is still available across the estuary and is attracting interest from a range of industries. The brownfield location offers promising prospects for companies across various sectors, thanks to its convenient access to major roadways, a deep-water quay, and an abundance of green energy.

### ENGAGEMENT

Energy Central continue to enable members to connect with a vast network of companies within the offshore energy sector. Many companies have found great value in attending regular networking events, which foster collaboration within the supply chain. In 2023, this collaboration led to a number of projects being successfully secured. Additionally, Energy Central actively promoted its distinctive offerings and enhanced its visibility through various events and exhibitions held throughout the year.



### ENERGY CENTRAL CAMPUS

Energy Central Campus is a unique partnership between the Port of Blyth, Northumberland County Council and the Offshore Renewable Energy Catapult, with a mission to create the pipeline of talent required for the expanding clean energy sector, at the same time, inspiring, training and delivering pathways to employment for the local community.



In 2023, construction began for phase one of Energy Central Campus, Energy Central Learning Hub. A new £15m+ STEM education and vocational training facility, developing energy sector skills and aspirations among young people at school and college, and adults re-training for new roles. Based at the Port of Blyth, learners will develop skills in a real-world clean energy Port setting. Set to open in 2024, facilities will include specialist electrical and mechanical workshops, classrooms, major regional STEM hub, digital skills training facilities, an immersive Clean Energy Visitor Centre and conferencing and events space for up to 250 people. The hub has already secured three core tenants including Bede Academy, Northumberland Skills and Port Training Services who will offer courses to young people and professionals within the energy industry.



## 3,500+

Young learners per annum engagement with STEM through the region wide STEM@EnergyCentral initiative.

## 800+

Learners per annum undertaking formal qualifications within the ECLH including, traineeships, apprenticeships, T-levels, and short modular courses.

## 5000

Initial visitors to the Clean Energy Visitor Centre in the first full year of operation, rising to 15,000 visitors per annum across the 10-year business plan.



The second phase of Energy Central Campus, Energy Central Institute, has now been approved by Central Government subject to Regional Unitary Authority sign-off. The £15m+ development will be a new higher-level skills and innovation facility, developing energy sector expertise at degree and PhD levels. Creating a focal point for collaboration between energy businesses, OREC, and Northeast universities, it will develop higher-level skills and technological innovations to keep the region at the forefront of energy sector growth. Facilities will include state of the art research labs and lecture theatre.

# THE FUTURE

It is satisfying to see that the recent rapid growth of the Port continues, with 2023 delivering the third consecutive year of record financial performance and solidifying its position as one of the UK's leading Trust Ports.



A big part of this success is linked to the offshore renewables sector and therefore the Government's ongoing commitment to reach 50GW of offshore wind capacity by 2030 remains encouraging. Being well-positioned for future development in the North Sea and beyond, it is therefore expected that the Port will only cement its position as one of the most prominent offshore renewable energy hubs in the UK. As part of this process, it is likely that the decommissioning of the UK's oil & gas assets will also continue and again, the Port is well placed to benefit, having a well established decommissioning facility at its Battleship Wharf Terminal.

However, to ensure long-term sustainability, diversity of trade still remains important and therefore there will also be a focus on growing other trade sectors such as containers, dry bulks, liquid bulks and general cargoes. Similarly, our logistics subsidiary, Transped, and training arm, Port Training Services, have an important role to play in ensuring ongoing success.

The business will also continue to expand its service offering beyond those traditionally offered by Port, with a particular focus on engineering solutions (design, fabrication, complex logistics etc) as has been successfully and increasingly delivered to customers over the last couple of years.

Linked with trade growth, the Port of Blyth, together with its Energy Central partners, will continue to play a vital role in the economic development of the region, stimulating employment and supporting the growth of companies involved in international trade. The ongoing NE devolution process, new investment zones, funding support, and "Green Superport" initiative (a collaboration between NE ports), will also assist with this process and, in particular, help us attract new green inward investment to the region.

In order to support economic growth and jobs, the Energy Central Campus will play a

crucial role in helping to deliver the clean energy workforce of the future. The state-of-the-art Energy Central Learning Hub will open its doors in 2024 as the first phase of an initiative, which could provide a template for similar schemes around the UK.

Whilst driving growth and economic activity, the Port is also determined to play its part in reducing carbon emissions and is striving to be carbon neutral by 2040, in line with the Government's Maritime 2050 strategy. Our Bates Clean Energy Terminal will no doubt play an important part in the process, not only attracting businesses wanting to operate in a low-carbon environment, but also being the initial focus of electrification, solar energy, low carbon fuels, and the potential utilisation of mine water as a heating source.

As a recognised major UK Trust Port, the commitment to serving a wide range of stakeholders will remain a key focus and they will continue to benefit from profits being routinely re-invested in order to improve the facilities and services offered to all Port users. The Port will also continue to liaise closely with both regional and national government to ensure that benefits are maximised to stakeholders as a whole.

In summary, the Port of Blyth is well positioned to continue its recent growth, building on exceptional financial performance and growth of the major economic cluster around the Blyth Estuary. With ongoing investments in infrastructure, skills, and sustainability, together with our partners, the Port is determined to continue to deliver positive impacts and increase prosperity for all of its stakeholders.







**PORT OF BLYTH**

South Harbour, Blyth,  
Northumberland NE24 3PB

**Telephone:** 01670 357 000

**Email:** [comms@portofblyth.co.uk](mailto:comms@portofblyth.co.uk)