

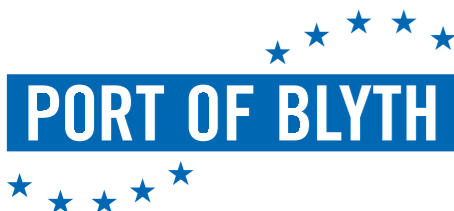
★ ★ ★ ★ ★  
**PORT OF BLYTH**  
★ ★ ★ ★ ★



# ANNUAL REVIEW 2024

# CONTENTS

CHAIR'S STATEMENT	03
CHIEF EXECUTIVE'S REVIEW	04
PORT OVERVIEW & STATUTE	05
CONSTITUTION & BOARD	06
FINANCE	10
PORT OPERATIONS & DEVELOPMENTS	12
FORWARDING & LOGISTICS	16
PEOPLE & CULTURE	20
ENVIRONMENT & DECARBONISATION	22
SAFETY & TRAINING	24
STAKEHOLDERS & THE COMMUNITY	26
ENERGY CENTRAL	28
THE FUTURE	30



**IT IS PLEASING THAT THE PORT'S RAPID GROWTH OVER RECENT YEARS CONTINUES TO PROVIDE INCREASINGLY SIGNIFICANT ECONOMIC BENEFITS TO THE REGION AS A WHOLE AND PROVIDES A MAJOR CATALYST FOR INTERNATIONAL TRADE.**

## CHAIR'S STATEMENT

I am delighted to confirm that Group financial performance continued at exceptional levels for the fourth year in a row in 2024. Our turnover proved the second highest on record at £31.48 million, which translated into an operating profit and profit before tax of £2.65 million and £2.23 million respectively. This was also the second highest profitability on record when excluding exceptional items from 2023, such as the sale of D Shed to the Offshore Renewable Energy Catapult.

The Port's operating business remained the largest element of Group activities and continued to contribute roughly two thirds of revenue generated. However, a key element of our strategy is to provide a "One Stop Shop" for customers and partners and therefore supporting logistics, forwarding, export packing and training services remain important elements of our overall service provision. Forwarding and logistics subsidiary, Transped, continued to play a key role and, although turnover was slightly down at £10.03 million, operating profit improved significantly to £0.39 million as a result of improvements to services and margins.

Ongoing strong financial performance also supported a further significant increase in capital expenditure to £9.62 million, committed to infrastructure projects and equipment purchase across the port estate. Developments included the major upgrade of B Shed (including significant office space) for one of our key tenants and the completion of a new warehouse, both at Bates Clean Energy Terminal. Additionally, the Port purchased a number of cable/pipe reels to support service provision to another key customer and a new strategic link to the Northumberland Enterprise Park was also completed. Investment in plant and equipment also continued with the purchase of new forklift trucks, reach stackers and other equipment to ensure our service levels to customers remained at the highest level.

Whilst there is an obvious focus on serving our customers, we are also conscious of the role we play across the region and for the local community. The Port's rapid growth over recent years continues to provide increasingly significant economic benefits to the region as a whole and provides a major catalyst for international trade. Furthermore, working with our "Energy Central" partners in Southeast Northumberland and with the North East Combined Authority on a wider regional basis, we continue to play a major role in the growth of the significant cluster of clean energy focused organisations around the Blyth Estuary and beyond. With the major new JDR Cable Systems factory also due to commence production in 2025, the cluster has become both nationally and internationally significant, set to create and support thousands of jobs for Northumberland and the wider region.

As well as these economic and employment benefits, the Port continues to provide wider positive impacts to a diverse range of stakeholders. In 2024, we were delighted to play a lead role, alongside our Energy Central Campus partners, in opening the £15 million+ Energy Central Learning Hub, training future clean energy workers and opening local employment pathways. Our record-breaking Christmas Appeal provided essential funding, gifts, and food to Blyth Food Bank and Operation Elf, with additional support extended to numerous charities, schools, community groups, and initiatives throughout the year.

Finally, I would like to say a huge thank you to our dedicated staff, fellow Commissioners, partner organisations, and stakeholders for your continued support. We look forward to achieving further success together.

**Catherine Young**  
Chair



**OUR FANTASTIC WORKFORCE CONTINUES TO GO ABOVE AND BEYOND IN HELPING TO DELIVER AN EXCEPTIONAL LEVEL SERVICE TO OUR WIDE CUSTOMER BASE. I WOULD LIKE TO THANK THEM YET AGAIN FOR MAKING A SIGNIFICANT CONTRIBUTION TO ANOTHER SUCCESSFUL YEAR.**

## CHIEF EXECUTIVE'S REVIEW

Our main port operating business once again delivered strong financial performance across 2024, including record turnover of £22.23 million. Adjusted operating profit also reached £2.47 million, the third highest on record, in what proved a very satisfying year.

The main driver to this success remained our core offshore energy sector business, focused primarily on offshore wind, including the ongoing mobilisation of the Sofia Offshore Windfarm. The construction base for Sofia commenced regular vessel call to/from our Bates Clean Energy Terminal whilst inter-array cable and rock bags for cable protection were mobilised via Battleship Wharf. One of the world's largest wind turbine monopile drills was also constructed and shipped out of our South Harbour Terminal together with a range of specialist subsea equipment and heavy lifts. Support was also supplied to the oil and gas sector, including the handling of pipe reels and decommissioning services handled through our dedicated decom facility at Battleship Wharf.

Difficult economic trading conditions in the short sea unitised market continued to subdue container traffic, although volumes remained steady, maintaining the twice weekly service operating between the UK and The Netherlands. This was supported by a busy warehousing operation, ensuring just in time deliveries of a wide range of consumer and industrial products.

Breakbulk cargoes consisted primarily of Refuse-Derived Fuel, supported by smaller volumes of logs. Throughput was encouragingly up on 2023 and there is hope for further growth going forward. Dry Bulk handling did fall back a little from a strong 2023, and consisted of long-standing alumina, cement, aggregate and sand trades together

with some woodchip cargoes. Liquid bulks were also marginally down on the previous year, consisting entirely of marine gas oil handled through the facility at Bates Clean Energy Terminal. However, this continues to be an important element of trade, providing an essential service to vessels visiting the Port, particularly those involved in the expanding offshore energy sector.

In addition to cargo related income, other revenue streams made an important contribution to overall performance, particularly property rental from tenants based in the Port. Most of these are linked to the offshore renewable energy sector and it was pleasing to see new and expanded property agreements concluded in 2024. These all form part of the nationally significant renewable energy cluster around the Blyth Estuary and are therefore important not only from a revenue perspective, but also in terms of supporting the exceptional level of service provided to vessels visiting the Port.

Other important non cargo related income included third-party terminal operations, training income, general conservancy and warehousing storage.

I'll finish as always by mentioning our fantastic workforce, who continue to go above and beyond in helping to deliver an exceptional level of service to our wide customer base. The Port's reputation is built on their efforts, and I would like to thank them yet again for making a significant contribution to another successful year.

**Martin Lawlor**  
Chief Executive



## PORT OVERVIEW & STATUTE

**As a statutory trust, Blyth Harbour Commission is responsible for conservancy and safe navigation on the River Blyth and operates for the benefit of all stakeholders, who include our employees, commercial and leisure port users, the local community and the regional and national economy.**

A diverse board of six Commissioners, including the Chief Executive, oversees the strategic development of the Port and its subsidiaries, through bi-monthly meetings with executive management. A number of committees such as those convened for audit and pension scheme purposes, also operate and, together with an Annual Public Meeting, ensure on-going good governance.

Board members are selected for terms of three years with the Chair and Deputy Chair appointed by the Board.

The Port routinely re-invests profits in order to improve the facilities and services offered to all Port users, generating enhanced economic activity and community benefits. As a recognised major UK Trust Port, the Port of Blyth also liaises closely with both regional and national government to ensure that benefits are maximised to stakeholders as a whole.

During 2024, Blyth Harbour Commission (BHC) continued to fulfil these important

duties as well as operating a busy modern commercial port, with four main terminals and associated cargo handling services.

In addition to its main port business, BHC operates a wholly owned subsidiary Transped Ltd providing complementary port-related services. Transped is a well-established international logistics and forwarding company and plays an essential role in attracting trade through the Port.

Although not a separate legal entity, Blyth Harbour Commission also operates a training division, Port Training Services (PTS), offering award winning training provision on a nationwide basis. PTS also provide all in-house training ensuring a highly qualified workforce.

Appointments throughout the business are made adopting Nolan principles and best practice from Trust Port guidance, with candidates chosen for a range of skills to meet the needs of the business at any given time.

# CONSTITUTION & BOARD

## COMMISSIONERS



**CATHERINE YOUNG**  
Chair

Catherine Young qualified as a chartered accountant with KPMG before going on to spend time both in practice and industry, including with PwC and Reg Vardy PLC.

Catherine has current roles in both commercial and not-for-profit businesses and has previously served in several other non-executive roles. These include as Senior Independent Director and Vice Chair at the North East Ambulance Service, as a Governor at the University of Sunderland and as Chair of Audit Committee at national charity Breast Cancer Care.

Catherine brings her experience in governance, board reporting and accountancy to her role as a Commissioner.

Catherine was appointed a Commissioner in 2015, Deputy Chair in 2022 and Chair in 2024.



**PAUL HARDISTY**  
Deputy Chair

Paul has extensive operational and board experience in the Energy and Marine industries having worked for a number of global companies including GE Oil & Gas, Halliburton, Aker Solutions and Royal IHC.

During his career, he has spent significant time overseas developing and delivering opportunities which included extended periods in Australia, Norway, USA, Brazil, and the Netherlands.

Most recently, Paul was Managing Director of Royal IHC in the UK and the Executive Director of Royal IHC B.V with the responsibility for leading the group's capital equipment businesses.

Paul was appointed as a Commissioner in 2021, Deputy Chair in 2024 and is Chair of the Audit Committee.



**MARTIN LAWLOR OBE**  
Chief Executive

Martin was appointed Chief Executive by Blyth Harbour Commission in 2006 having previously held the roles of Deputy Chief Executive and Commercial & Operations Director. He also acts as Chair of the commission's logistics subsidiary Transped.

Martin is a council member of the British Ports Association, having served as Chair between 2018 and 2021, a board director of Port Skills & Safety, Chair of regional flagship skills and education initiative, Energy Central Campus, and has held positions on a number of regional economic and strategic boards.

Having overseen the Port of Blyth's significant growth over recent years into one of the UK's largest Trust Ports, and contributed to the wider sector nationally, Martin was awarded an OBE for services to the Ports, Maritime and Offshore Energy Industry in 2024.

Martin was appointed Chief Executive and a Commissioner in 2006.



**LUCY WINSKELL OBE LL**  
Commissioner

Lucy Winskell OBE is His Majesty's Lord-Lieutenant of the County of Tyne and Wear.

Previously Pro Vice-Chancellor (Employability & Partnerships) at Northumbria University, Lucy was a member of the Executive team after transitioning into higher education following a 28-year career as a litigation lawyer.

Lucy's non-executive career has been focused on economic growth and regeneration within the North East.

Lucy's regional roles have included Chair of the North East Local Enterprise Partnership; Chair of the North East Combined Authority; Board Member of the North East Regional Investment Fund and North East Access to Finance (both supporting SME growth); non-executive Director of Government Office North East; Chair of the North East Industrial Development Board; Board Member of ING; and Chair of Board, North East Chamber of Commerce.

Lucy is a strong advocate for the region at a national level. As a member of the Arts and Humanities Research Council, she highlighted the importance of the cultural and creative sector in a regional economy and as Vice Chair of the British Chambers of Commerce (BCC) she ensured a regional voice formed part of BCC's lobbying and policy work.

Lucy was appointed as a Commissioner in 2023.



**RICHARD TURNER**  
Commissioner

Richard Turner is Chief Executive of Tekmar Group PLC, a global market leader in subsea cable, umbilical and flexible pipe protection systems.

Previously, Richard was Chief Executive of Geoquip Marine, Bel Valves & BEL Engineering, President and CEO of JDR Cables and member of the Offshore Wind Industry Council (OWIC). Prior to JDR, Richard worked for Technip Umbilical Systems, where he was Vice President of Global Manufacturing.

Earlier in his career Richard worked in the construction equipment industry with Komatsu and Terex. He has a Mechanical Engineering degree and an MBA from Durham University.

Richard was appointed as a Commissioner in 2021.



**ANDREW MILLS**  
Commissioner

Andrew is CEO of ITS, a system integration company focused on regulated industries and also holds a number of non-executive and advisory positions.

Most relevant to the Port is his Chairmanship role at NOF, a UK wide business development membership organisation working in the energy sector, who also owns and operates Energi Coast.

Previously, Andrew was Chief Executive Officer of ITI, a UK wide technology company. Early in his career, Andrew qualified as a chartered engineer with Assystem, a global consultancy, engineering and project management company.

Andrew was appointed as a Commissioner in 2024.

All appointments are under the Blyth Harbour Revision (Constitution) Order 2004 ("the Order") which adopts the requirements contained within Ports Good Governance Guidance published by the DFT (March 2018) in respect of the recruitment, selection and Appointment/re-appointment of Commissioners.



## EXECUTIVE MANAGEMENT



**MARTIN LAWLOR OBE**  
Chief Executive

Martin was appointed Chief Executive by Blyth Harbour Commission in 2006 having previously held the roles of Deputy Chief Executive and Commercial & Operations Director. He also acts as Chair of the commission's logistics subsidiary Transped. Martin is a council member of the British Ports Association, having served as Chair between 2018 and 2021, a board director of Port Skills & Safety, Chair of regional flagship skills and education initiative, Energy Central Campus, and has held positions on a number of regional economic and strategic boards.



**ALAN TODD**  
Port Director

Alan joined the Port in 2004 and as Port Director is responsible for overseeing the Operations and Engineering departments, as well as assisting the Commercial team on new customer opportunities. Having qualified as a Chartered Civil Engineer, Alan previously worked for Volker Stevin as a contracts manager and Corus as a specialist advisor in the construction of quay structures around the world.



**ALASDAIR KERR**  
Commercial Director

Alasdair is an experienced commercial professional, who has worked in the Ports industry for over 20 years. Alasdair has used his breadth of market sector understanding to deliver record business growth and large-scale quayside infrastructure developments.

Alasdair joined the Port of Blyth in 2021 and has played a key role in the Port's development, welcoming new customers and driving up revenue for the Port and its subsidiaries.



**EDWIN DICK**  
Harbour Master

Edwin has 27 years of experience in the marine industry, having begun his career at sea when he joined the Merchant Navy in 1997. He transitioned to the Port Sector in 2008, joining the Ports Marine Department in 2009 as a Pilot/Assistant Harbour Master and served as Deputy Harbour Master for six years, before being appointed Harbour Master in 2019.

In addition to his role as Harbour Master, Edwin is a Council Member of the UK Harbour Masters Association. He is also the Chair of both the North East Ports Group and the MNWB Tyne Port Welfare Committee.



**ORAN ROBSON**  
Commission Secretary and Finance Director

Oran joined the Port in 2016 and as Commission Secretary and Finance Director is responsible for both Finance and IT operations. Oran qualified as a chartered accountant with EY before moving into industry and working for a number of listed organisations, including Rolls-Royce plc. Oran is also a director of both Transped and Energy Central Campus, as well as member of the British Ports Association's Finance Group. In addition, he is a Fellow of the Institute of Chartered Accountants.

## PRINCIPAL OFFICERS

★ **M LAWLOR B.A. OBE**  
Chief Executive

★ **A S TODD C.ENG. MICE**  
Port Director

★ **E J DICK**  
Harbour Master

★ **A KERR B.SC.**  
Commercial Director

★ **O K H ROBSON B.SC. FCA**  
Commission Secretary and Finance Director



# FINANCE

The Port had another outstanding year in terms of financial performance in 2024, achieving the highest Port turnover on record and the 2nd highest Group turnover on record. Both the Port and its subsidiary Transped delivered exceptional results once again.

GROUP PERFORMANCE INDICATORS	2024	2023	2022	2021	2020
Turnover (£'000s)	31,477	31,521	30,413	25,517	21,992
EBITDA (£'000s)	6,435	7,114	6,426	4,601	3,374
Operating profit (£'000s)	2,646	3,883	3,670	2,132	1,298
Adjusted operating profit (£'000s)*	2,851	2,782	3,852	2,342	1,513
Profit before taxation (£'000s)	2,226	3,567	3,318	1,807	948
Adjusted profit before taxation (£'000s)*	2,431	2,466	3,500	2,017	1,163

PORT PERFORMANCE INDICATORS	2024	2023	2022	2021	2020
Turnover (£'000s)	22,230	21,548	19,190	14,939	11,924
Operating profit (£'000s)	2,260	3,725	3,285	1,624	1,035
Adjusted operating profit (£'000s)*	2,468	2,624	3,467	1,834	1,250
Profit before taxation (£'000s)	1,855	3,427	3,208	1,578	841
Adjusted profit before taxation (£'000s)*	2,063	2,326	3,390	1,788	1,056
Total throughput inc road / rail (tonnes)	485,000	553,000	607,000	700,000	649,000
Total throughput seaborne only (tonnes)	481,000	551,000	577,000	652,000	502,000
Customer service feedback (scale 1 to 10)	9.0	9.0	9.0	9.1	9.3
RIDDOR accident statistics (per 100 workers)	0.0	0.0	0.8	0.0	0.9

The above data is extracted from the Annual Report and Financial Statements approved by the Commissioners and upon which the auditors have provided an unqualified audit opinion for the years shown.

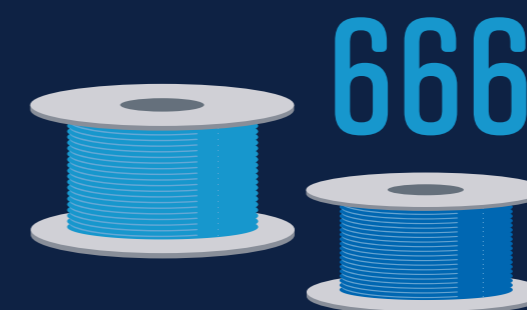
\* Adjusted operating profit and adjusted profit before taxation are operating profit and profit before taxation excluding the impact of current and past service pension costs. As this is a non cash impact, which can be volatile from year to year, the Commissioners believe its exclusion presents a fairer presentation of performance.

# 2024 AT A GLANCE

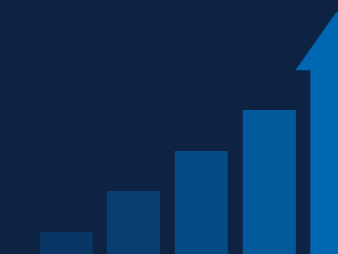
PORT TURNOVER  
HIGHEST ON RECORD  
**£22.23M**



PORT OPERATIVE  
APPRENTICES TRAINED  
IN 2024 ACROSS THE UK



KM OF OFFSHORE  
WIND CABLE HANDLED  
THROUGH THE PORT



GROUP TURNOVER  
2ND HIGHEST ON RECORD  
**£31.48M**



OVERALL BERTH UTILISATION  
UP ON 2023



**£9M**  
INVESTMENT  
INTO PORT FACILITIES

# PORT OPERATIONS & DEVELOPMENTS



2024 was another exceptionally busy year for operations at the Port of Blyth, with a diverse range of vessels and cargo types handled spanning multiple sectors. Our marine and landside operational teams have worked closely together to ensure that a high level of service was maintained across all activities. This collaborative effort has been instrumental in driving the Port's continued success and growth throughout the year.

## KEY PORT DEVELOPMENTS

In 2024, the Port of Blyth made significant investments to enhance its infrastructure and operational capabilities.

One of the main projects was the completion of a new 2,500m<sup>2</sup> warehouse at Bates Clean Energy Terminal. The facility now serves as the operational base for the mobilisation of oil spill response equipment.

Another key development was the transformation of a 3,000m<sup>2</sup> storage warehouse into state-of-the-art engineering facilities for one of our key tenants. This project included the installation of four overhead cranes and the creation of 400m<sup>2</sup> of office space, designed to accommodate 25 to 30 engineers. This £1.5 million investment by the Port underscores its commitment to supporting the growth of its offshore supply chain.

The Port also supported Advance Northumberland in the construction of a 100 tonne bollard at the grade 2 listed West Staithes timber structure, located next to the Northumberland Energy Park Phase 1 site. This project presented considerable challenges, requiring intricate design and construction work.

Additionally, new concrete hard standing areas were added at both Battleship Wharf and Bates Terminal, enhancing the Port's ability to handle a variety of cargo and operations.

In 2024, the Port also invested approximately £1 million in the refurbishment of 79 Bridge Street, the former Port Head office. This project development will continue across 2025 and will see the building being transformed into a high specification office space, whilst preserving the integrity of the Grade 2 listed structure.

Investment into plant and equipment included the addition of two new electric vans, an electric forklift for Transped packing, and a survey boat for the marine department. A new 30m floating pontoon was also installed at Battleship Wharf to support pilot boats and CTVs, and an additional Terex reach stacker was purchased to support container line operations at the South Harbour terminal.

## OFFSHORE ENERGY

With the Port maintaining and expanding its role as a leading UK offshore energy hub, the operations team had another exceptionally busy year in 2024, with several key projects and partnerships supported linked to the sector.

One of the major ongoing projects involved Baker Hughes for the BP Cypré Project. In March 2024, the Port saw the arrival of the second barge from Newcastle, carrying 3,000 tonnes of flowline pipe, which were collected in three baskets and brought to Blyth. Later in the year, the vessel Happy Star docked at Battleship Wharf for three months to load over 7,500 tonnes of flowline pipe, which were then delivered to Trinidad.

**10,000**  
tonnes of rock armour  
handled over the terminal



Across the year, the Port also supported RWE during the construction phase of the Sofia Offshore Wind Farm. Their dedicated facility at Bates Clean Energy Terminal facilitated around-the-clock operations and hosted regular visits from their service operation vessel.

The ongoing support of Van Oord's operations for the Sofia Offshore Wind Farm was another key element of activity in 2024. In the first half of the year, 12,000 tonnes of inter-array cable was received into the Port, to be spooled into 14 purpose-built storage tanks at Battleship Wharf. Across the second half of the year the cable was spooled out for installation offshore. In addition, our skilled stevedores handled 10,000 tonnes of rock armour over the terminal, which was placed in rock bags used for cable protection on the seabed. Over 1,000 bags were filled following extensive trials and the development of a new safe system of work.

The Port also provided significant support in the construction of one of the world's

"I'd like to express my thanks to the Port of Blyth for the excellent support from the on-site team during our recent setup for Van Oord's operations for Sofia Offshore Windfarm. Their quick response and proactive approach have been greatly appreciated, ensuring the smooth progress of the setup process."

Ross Whittingham, Technical Director  
Motive Offshore

largest offshore monopile drills. A large jack-up vessel was based in South Harbour for three months, where 2,000 tonnes of drilling equipment were loaded onto the back deck of the vessel.

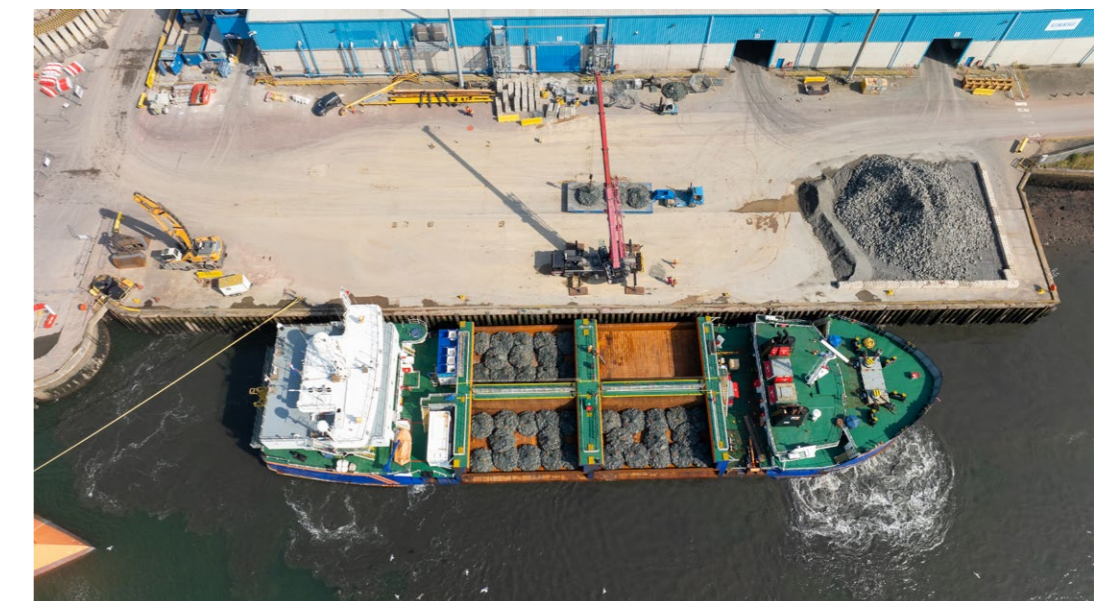
These projects are just a few examples of the Port of Blyth's key role in supporting offshore energy operations, further cementing its position as a leading hub for the industry.

## OTHER SECTORS

In 2024, the Port of Blyth continued to support operations across various sectors.

Decommissioning activity saw smaller volumes compared to previous year, although still involving the handling of oil and gas related seabed clearance and the first successful decommissioning rail wagons.

Additionally, the Port handled a wide variety of other cargoes, including logs, woodchip and steel, further demonstrating its versatility, all expertly managed by our dedicated operational team.



**12,000**  
tonnes of inter-array cables  
received into the Port

**2,000**  
tonnes of drilling equipment  
were loaded onto vessel

**7,500**  
tonnes of flowline pipe  
loaded at the Port and  
delivered to Trinidad

# PORT OPERATIONS & DEVELOPMENTS



## MARINE OPERATIONS

In line with all other Port departments, marine operations were exceptionally busy in 2024, maintaining safe and efficient navigation on a 24/7 basis. Commercial vessel movements remained high and with a record number of tug assisted movements. This record, together with the high total of deadweight tonnage reflects the increasing size of vessels utilising the Port, particularly those linked to the offshore energy sector.

When also factoring in fishing craft, workboats, leisure craft etc, the Port's Marine Department again managed over 10,000 overall vessel movements across the year.



Wimbourne Quay deepened from 6.7m (LAT) down to

# 7.5M

Bates Quay deepened from 7.6m (LAT) down to

# 8.0M

Battleship Wharf Berth 1 deepened from 5.8m (LAT) down to

# 6.7M

# 153

TUG ASSISTED MOVEMENTS

A record high for the Port

# 2.09M

DEADWEIGHT TONNAGE

Exceeded 2M DWT for the fifth consecutive year

# 830

COMBINED PILOTAGE ACTS

Maintained very high levels of recent years

## COMPLIANCE

The Port remained compliant with the Port Marine Safety Code (PMSC) across 2024, with the annual internal audit of the 'Marine Safety Management System' undertaken by the Port's HR & Safety Manager. He acts as the 'Designated Person' under the Code, reporting to the Board of Commissioners, who are the 'Duty Holder'. The report confirmed full compliance and that the Port of Blyth continues to demonstrate best practice, whilst maintaining an excellent safety culture.

The Port also remains compliant with the International Ship and Port Facility Security Code, ensuring that all port operations are carried out in a secure environment, in line with national legislation. This was ratified by an external audit carried out during the year, which also acknowledged the significant additional investment in CCTV and an access management system.

A further Port Emergency exercise was also undertaken in 2024, to help strengthen the Port's emergency plans and ensure a comprehensive and appropriate response to any actual emergency situations that may occur. The exercise also involved excellent representation from emergency services and agencies, continuing to demonstrate the high-level working relationship that the Port maintains with all relevant parties.

## DREDGING & CONSERVANCY

120,000 tonnes of dredged material was removed during 2024 and deposited in the strictly controlled disposal ground off the Port. This remains licensed by the Marine Management Organisation and is to be renewed in 2025.

A capital dredging campaign was also undertaken, deepening three berths and enhancing capability for handling future vessel calls.

The vessel 'Blyth Endeavour' undertook several external dredge campaigns, demonstrating its ability to provide extra services outside the Port.

The Port also purchased a trailer-based Survey Boat in 2024, expanding its ability to offer services by completing bathymetric surveys to external clients, while enabling the boat to operate in tighter and shallower areas.

Trinity House conducted their annual inspection of Aids to Navigation in November, with no defects recorded and therefore the Port remains compliant as a local lighthouse authority.

In addition, a modernised, energy-efficient lighthouse light was installed, replacing the previous mechanism to enhance navigation safety, while continuing to reduce its carbon footprint. The process of migrating navigation lights to an online monitoring portal also commenced, improving efficiency in tracking and maintenance.

It is pleasing to also confirm that there were no marine pollution incidents recorded in 2024, with the Port remaining in full compliance with OPRC regulations and continuing to follow its Oil Spill Contingency Plan.

# FORWARDING & LOGISTICS

As part of the Port's commitment to delivering a comprehensive service, its international logistics and forwarding subsidiary, Transped, continued to offer reliable, end-to-end global solutions to its expanding customer base throughout 2024.

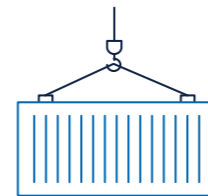


## CONTAINER SERVICE

2024 was another successful year for Transped with the company providing the majority of trade on the well established twice-weekly container service between Moerdijk and Blyth. This service provides a vital link between the UK and The Netherlands and is operated by our valued shipping partner A2B-Online.

Transped's bespoke super high cube container fleet was also extensively renovated across the year, offering even more flexibility in carrying our customers larger and heavier cargo. These containers allow for cargo that would normally be too large for standard containers to be shipped by sea, thus offering Transped's customers a viable and attractive alternative to road transport.

Additionally, investment in staff in The Netherlands and an increased collaboration with our longstanding Dutch Agents, Korevaar Logistics, enabled cost savings on transport, and an enhanced service for pre-carriage on the Continent.



**8,600**  
TEU containers shipped  
into Blyth on the service  
during 2024

## WAREHOUSING & LOGISTICS

Transped continued to work alongside the Port of Blyth, with cargo stored in high-quality, secure, on-Port warehousing facilities.

Further investments in heavy duty plant and equipment alongside additional electric forklifts were made, to continue to ensure that operations run smoothly. This specialist equipment, alongside experienced Port staff, ensure that an exceptional service is provided from vessel, through warehouse and onto road vehicle.

Transped also invested in an offsite 3,000 sq. meter warehouse to support additional cargo for major customers. This warehouse offers additional capacity, supplementing the 20,000 sqm+ high quality warehousing available on the Port estate.

Working with a range of local and national hauliers, Transped also continues to support its customers with a flexible and efficient logistics service, meeting any requirements that they have across the UK and Europe.

## PROJECT FORWARDING

Part of the Port Group One-Stop-Shop philosophy is Transped's project forwarding division, which also had a very positive 2024.

Offering global out-of-gauge and specialised cargo transport services, its trade expanded across the year, servicing customers based within the Port of Blyth and across the UK and Europe. Furthermore, the associated, long-standing, export packing business continued to grow with the new expansion of the warehouse production facility due to open in early 2025. This will increase capacity and enhance the services offered to existing and new customers from 2025 and beyond.



# PEOPLE & CULTURE



## OUR MISSION

TO PROVIDE AN EXCEPTIONAL SERVICE TO ALL OUR STAKEHOLDERS, MAXIMISING BOTH ECONOMIC AND SOCIAL VALUE.



## OUR VISION

TO BE WIDELY RECOGNISED AS A NATIONALLY SIGNIFICANT AND SUCCESSFUL TRUST PORT, AT THE FOREFRONT OF SUPPORTING THE OFFSHORE RENEWABLE ENERGY SECTOR.



## OUR VALUES



A SAFE ENVIRONMENT FOR ALL



BUILT ON TRUST



DELIVERING A HIGH QUALITY SERVICE



WORKING AS ONE TEAM



GOING ABOVE AND BEYOND

## GREATEST ASSET

The greatest asset of the Port is the workforce, whose dedication, loyalty and flexibility are second to none, with many employees choosing to work at the Port for most of their careers, creating a trusted working environment for all.

As our customers tell us, this is the factor that really differentiates us from the competition and often results in vessels being turned around hours, if not a day, quicker than other ports that they may utilise.

## HEALTH & WELLBEING

In 2024, the Port of Blyth successfully achieved the Better Health at Work Bronze Award, which recognises the efforts of employers in addressing health issues within the workplace.

Throughout the year, our Health Advocates team worked hard to develop and deliver a series of health and wellbeing initiatives to the workforce, which focused on three main campaign areas: stress and work-life balance, physical activity, and mental health. Notable events include staff breakfast clubs, NHS free health checks, gym in the park sessions, an ice cream van visit, staff weight loss challenge and a men's mental health session.

The Port will continue to build on its progress to date throughout 2025.



"This is a fantastic Bronze submission from the Port of Blyth, showing they've really understood the assignment and run with it, having provided a number of great activities and information to their staff throughout the year."

BHAWA Assessor Comment



## HONOUR

In 2024, our Chief Executive, Martin Lawlor, was awarded an OBE in the Birthday Honours list in recognition of his service to the Ports, Maritime and Offshore Energy industries.

Under Martin's leadership, the Port of Blyth has experienced substantial growth in both trade and customers, establishing itself as a leading UK offshore energy hub.

## PEOPLE

### APPRENTICESHIP COMPLETIONS

The Port of Blyth proudly celebrated the achievements of four apprentices who successfully completed their apprenticeships in 2024.

All four have now transitioned into full-time roles, continuing to excel and grow within the organisation.

### WORKFORCE COMMITMENT

In 2024, the Port of Blyth maintained exceptionally low levels of staff sickness and turnover, reflecting the dedication and well-being of our workforce. This achievement is a testament to our commitment to creating a safe environment for all, ensuring the health, safety, and well-being of our employees.



## LONG SERVICE

As we continue to grow, the dedication of all our staff ensures that we remain a trusted, high performing organisation, delivering exceptional service.

In 2024, the Port of Blyth proudly recognised the outstanding commitment and dedication of four valued team members through our Long Service Awards, with lengths of service ranging from 20 to 25 years. Each member of staff played an integral role in the Port's success and have embodied our core values throughout their employment.

During 2024 and early 2025, three long serving members of staff retired, after a huge, combined service of 139 years. The long-standing contributions reflect the strength of our team and the positive working environment we strive to foster.

# ENVIRONMENT & DECARBONISATION



## ENVIRONMENT

### GREEN TRADE

The Port of Blyth continues to play a significant role in the offshore energy sector, contributing to the development of major UK offshore wind farm projects and attracting a significant cluster of companies dedicated to driving the energy transition forward.

Part of this cluster is the internationally significant Offshore Renewable Energy Catapult, providing world leading test facilities for the next generation of offshore wind turbines. Together with other sector leading companies, this further strengthened the Blyth Estuary's position in 2024, as a catalyst in advancing the green energy revolution.

### MARINE CONSERVATION

As the Statutory Harbour Authority overseeing both commercial and recreational operations at Blyth Harbour, the Port of Blyth is deeply committed to environmental stewardship, whilst maintaining a sustainable and commercially viable Trust Port.

The Port partners with a range of environmental organisations, such as the Environment Agency and Marine Management Organisation to promote high environmental standards and ensure that all relevant environmental regulations are followed. The Port is also instrumental in the protection and management of several key natural areas, including a marine conservation zone, a site of special interest, and special protection areas dedicated to marine and coastal ecosystems.



As a corporate member of Northumberland Wildlife Trust, the Port is determined to minimise its impact on all wildlife and where possible provides enhanced habitats and wildlife corridors in areas such as grass terminal perimeter bunds, designated habitat zones and low-level mudflats, all of which encourage wildlife of many kinds.

In 2024, the Port continued to work with RSPB and Groundwork North East on several projects, such as wild oyster farms, butterfly habitats and more, with the objective of enhancing habitat around the Blyth Estuary.



## ENVIRONMENTAL POLICY AND ACCREDITATION

The Port continues to maintain accreditation to ISO 14001 in 2024, with a positive external surveillance audit confirming no non-conformances and good evidence of continual improvement.

Positive achievements across the year included reductions in waste going to landfill, as well as fuel and gas consumption. In addition to good control over any potential environmental contamination and raising environmental awareness across our workforce, this demonstrated ongoing high standards of environmental management.

**ISO 14001**  
Environmental management systems certification maintained and strengthened through continual improvement

# ENVIRONMENT & DECARBONISATION

## DECARBONISATION

In 2024, Port of Blyth continued to make considerable progress in delivering more sustainable Port operations, to support the UK's transition to clean energy. In order to achieve a continuous process of decarbonisation, the Port consistently monitors its emissions, with a target to becoming carbon neutral by 2040.

### Scoping our emissions



**SCOPE 1**

Scope 1 (direct) emissions produced on-site by fossil fuel combustion, mainly by cranes, internal movement vehicles/plant (including marine pilot boats) and gas/oil heating systems.



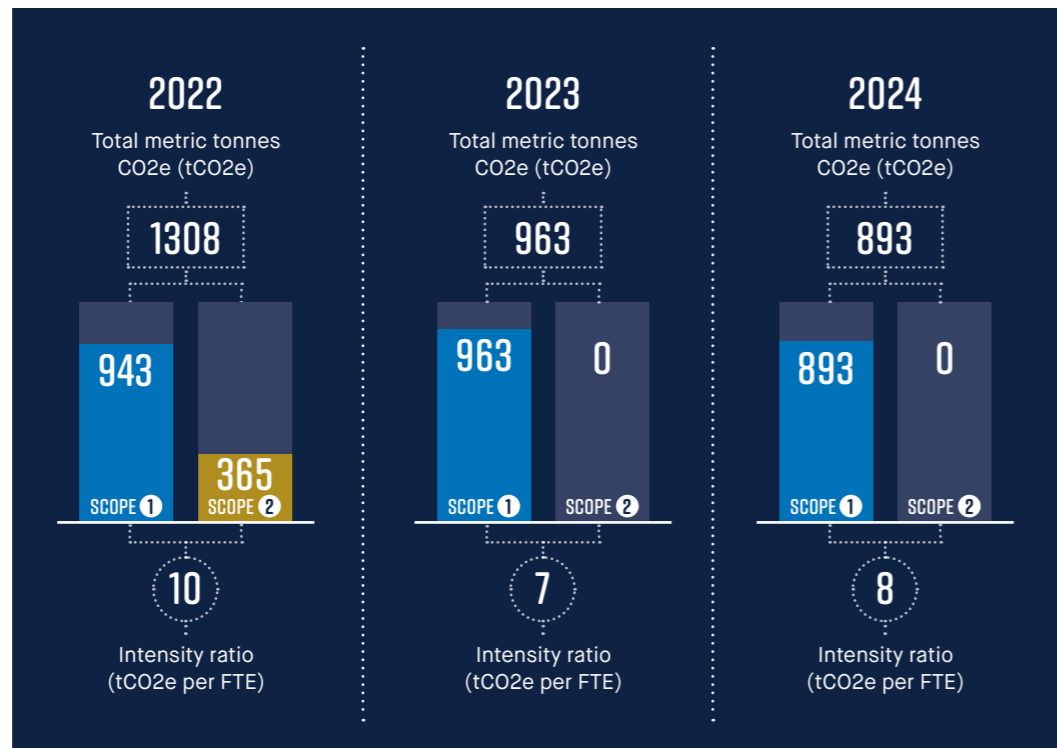
**SCOPE 2**

Scope 2 (indirect) emissions embedded within the energy the Port consumes that are not generated on-site. Indirect emissions are typically associated with electricity used to power buildings, workshops, quayside cranes, warehouses and electric plant and fleet vehicles.



**SCOPE 3**

Scope 3 (other indirect) emissions include transport by third parties, such as logistics and distribution companies, (including Transped) employees undertaking business and commuting travel and waste collection and processing data.



## CARBON REDUCTIONS

Overall reduction of 7.3% in carbon emissions generated from Port activities in 2024. This is a result of:

- Further electrification of Port plant and vehicles, with the purchase of additional electric forklift trucks, vans, and the installation of additional charging stations.
- Increase in energy efficient infrastructure, with a full year's benefit from the installation of additional solar panels across the Port's terminals.
- Reduction in fuel and gas consumption across Port sites.

## LIMITATIONS

Calculating Scope 3 emissions is challenging as they encompass the entire supply chain's emissions from goods and services. Where available, for example transport related emissions from our container services, this data is collected, but is not comprehensive and not suitable for formal reporting.

However, the Port remains involved in a British Ports Association steering group that is working to standardise the calculation methods for Scope 3 emissions from ports, which is expected to lead to more comprehensive reporting in the future. The group will also allow for sharing of best practice between port members.

## WORKFORCE ENGAGEMENT

In 2024, the Port established a Decarbonisation Steering Group to formalise our strategy to achieve Net Zero by 2040 and build on the good work delivered to date.

These meetings are held on a bi-monthly basis and bring together representatives from across the business to discuss progress and define actions.

As part of the drive to empower our people and ensure buy in to our decarbonisation strategy, we have revised our Staff Suggestion Scheme to encourage employees to send in decarbonisation suggestions to support with our Net Zero aspirations.

Employees whose suggestions are recommended for implementation, now receive a certificate and a cash reward, as recognition for their support in helping our workplace to become more sustainable.



Kevin Vyse, Head of Operations (left) presenting Stephen Mcghie, Stevedore, with certificate following successful decarbonisation suggestion.

Over the next 12 months, we are focused on:



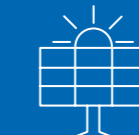
### FORMAL DECARBONISATION STRATEGY

The Port will develop a more detailed, formal decarbonisation strategy that highlights milestones and targets on the road to Net Zero, including key challenges and associated indicative costs.



### ELECTRIFICATION REPLACEMENT SCHEME

The Port has committed to a plan to convert all plant and vehicles to electric, hybrid or operating on alternative fuels by 2040. In 2025, we will invest further in expanding our electric and hybrid fleet to support this commitment.



### ENERGY EFFICIENT INFRASTRUCTURE

Increase the deployment of solar power PV panels throughout the Port estate where practicable.



### NET ZERO GOAL FOR 2040

Implement further programmes and initiatives that educate and engage our workforce in the Port's decarbonisation strategy and commitment to net zero.

# SAFETY & TRAINING

## HEALTH AND SAFETY

In 2024, the Port of Blyth upheld its strong commitment to safety, as always prioritising the wellbeing of its employees, customers, and the wider community. Reflecting its core value of fostering a 'Safe Environment for All', the Port achieved another year with no reportable accidents over more than 25,000 equivalent working days.

In addition, the Port's 'Report Incidents to Prevent Accidents' digital platform proved very successful in 2024, with 99% of incidents reported within 24 hours. This easy-to-use QR code system is displayed across all our terminals, enabling staff, customers and contractors to report hazards quickly and efficiently.

The Port also retained its ISO 45001 Health & Safety certification in 2024, reinforcing its status as one of the UK's safest ports and demonstrating its ongoing dedication to high safety standards. This achievement was supported by positive outcomes from both internal and external audits.

On a national level, the Port plays an active role in raising industry standards through its membership with Port Skills and Safety (PSS), the UK's professional safety and skills membership organisation for ports. The Port Chief Executive, Martin Lawlor, also serves as a board director at PSS, working directly to drive forward improvements in port safety on a national level.



In addition, the Port's HR and Safety Manager, Stuart Balmer-Howieson, has collaborated closely with PSS in the review and development of key safety documentation, including the Safety in Ports guidance.

## ISO 45001

Health & Safety certification maintained and strengthened through continual improvement



## TRAINING

Port Training Services, training division of the Port of Blyth, had another busy year operating across multiple sectors from heavy industry, offshore energy and the Port sector. PTS deliver a multitude of products and services to ensure our delegates receive the knowledge, training and skills for them to operate safely and competently in their working environments.



As the leading provider of the Port Operative Apprenticeship in the UK, PTS' apprenticeship delivery also continued to grow, with many new apprentices supported across England from the South Coast to the Scottish Borders. PTS is working hard with employers and educational bodies to expand our apprenticeship offer to the other home nations of the UK.

In terms of commercial training, PTS continued to work in partnership with The Wind Academy, supporting the delivery of Green Skills Bootcamps throughout 2024 from our Wind Turbine Training Facility at Bates Clean Energy Terminal, delivering numerous GWO Slinger Signaller courses. Further expansion of The Wind Academy facilities is underway to meet increased demand for highly skilled individuals to serve in the offshore wind sector. These should be operational by early 2025.

# 91

Port operative apprentices trained in 2024

In addition, GEV Windpower had a very successful training campaign in 2024, using the PTS Wind Turbine Training Facility to train more individuals to join their team and ensure they are competent. 2025 promises to build on this with a new, exciting project to help more people enter the offshore wind sector as blade technicians to serve the global marketplace.

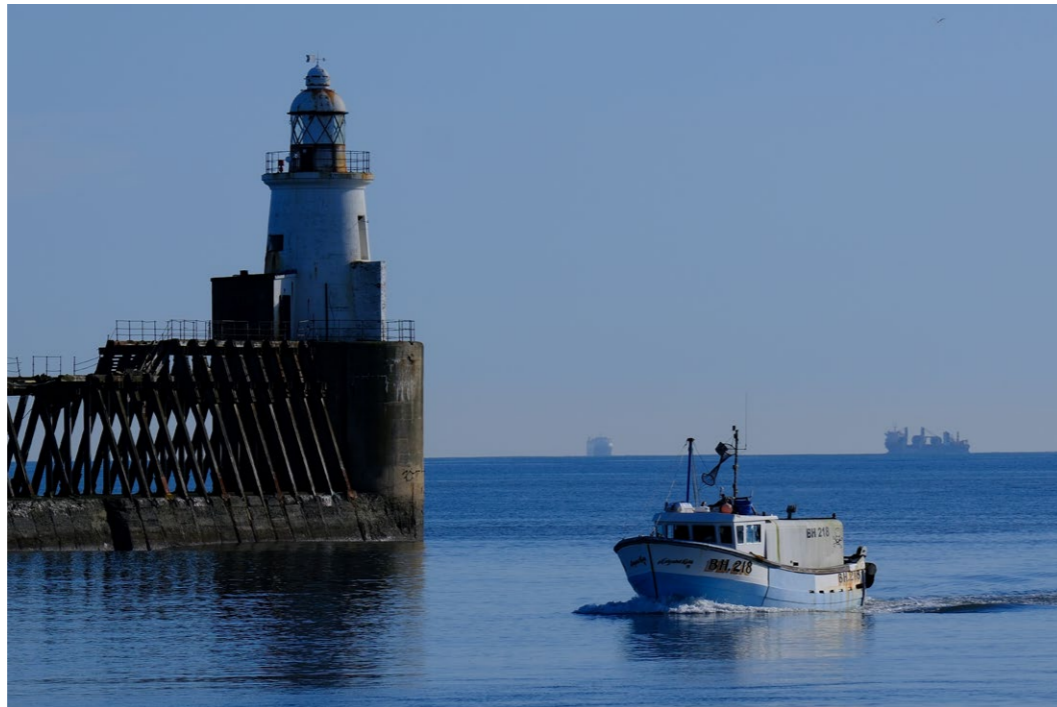
Furthermore, PTS have now relocated to the Energy Central Learning Hub, a state-of-the-art thriving educational campus based at the Port of Blyth, to work closely with other providers and continue to address the skills needs of industry.

# STAKEHOLDERS & THE COMMUNITY

In 2024, the Port of Blyth, one of the largest Trust Ports in the UK, continued to engage with its diverse range of stakeholders on a local, regional, national and international level.

These include all employees, commercial and leisure port users, national and regional government, the local community, and a whole host of other relevant interest groups.

A comprehensive stakeholder mapping exercise was also completed to ensure that the Port is considering the requirements of all interested parties when making decisions about its activities and strategy. This is done on an annual basis, also highlighting changes to our stakeholder base and helping us make sure that no views and interests are omitted from our decision-making process.



Community Photography Competition Winner - The Returning Fishing Boat by Graham Crawley

As part of this engagement strategy, the Port is committed to strengthening its relationships with local, regional and national politicians and governmental officers, so that we are closely aligned to, and can best influence, economic and social value priorities. In 2024, the Port engaged with Secretaries of State, Ministers, regional MP's and local Councillors on a variety of opportunities and issues for the port and wider sector. We have also liaised closely with the North East Mayor, together with officers from the NE Combined Authority and Northumberland County Council regarding the emerging Local Growth plans.

The Community Photograph Competition continues to engage the local community, receiving more entries than ever in 2024. Graham Crawley claimed the top prize with his submission, The Returning Fishing Boat.



# £3,472

donated to Blyth Foodbank

## LOCAL COMMUNITY

The Port is acutely aware of its responsibility to the local community, both in terms of positive economic benefits but also being a good neighbour. Resident Liaison Meetings therefore continued to take place throughout the year, covering areas adjacent to all of our terminals. This allowed residents to be kept informed of activities and raise any issues that the Port could help to mitigate.

The Port has also continued its commitment to the local community through its community support program. This initiative supported a variety of local projects and organisations, focusing on enhancing health and well-being, preserving maritime heritage, fostering community development, and promoting sustainability efforts.

In 2024, recipients included charities and not-for-profit community initiatives involved in everything from adult learning and physical disability support to arts initiatives and local sports clubs, to name but a few.

## SUPPORTING BLYTH

The Port of Blyth's 2024 Christmas Appeal also brought together staff, tenants, local businesses, and the community to raise funds and donate gifts for those in need in Blyth. The Port set up a JustGiving page for Blyth Foodbank and acted as a hub for gift donations for Operation Elf, raising awareness through social media. Employees also volunteered and participated in a charity cycle event with Puregym Blyth, cycling 50 miles to raise money.

Thanks to these efforts, £3,472 was donated to Blyth Foodbank, and over 100 gifts were collected for Operation Elf, ensuring children in Blyth experienced the magic of Christmas.



## SPONSORSHIP

Complementing our charitable and community support, the Port has continued to provide sponsorships to non-charitable organisation and events.

The long-term sponsorship with Blyth Spartans continued, with our support extending from the first team to youth development and encouraging diverse participation in grassroots football. In addition, the Port collaborated with Blyth Town Council to sponsor a variety of vibrant summer events, including Blyth Live, which brought over 15,000 people to Blyth Beach.



**"The Operation Elf team would like to say a massive thank you to everyone at the Port of Blyth that has donated to this year's appeal. Due to the generosity of local organisations and individuals we have been able to provide Christmas packs for all the requests we received, making it an extra special Christmas for families in need in Blyth."**

Sharon Harris  
CVA Blyth Valley

# ENERGY CENTRAL



Blyth is home to the influential Energy Central partnership, which includes the Port of Blyth alongside Northumberland County Council, Advance Northumberland and the Offshore Renewable Energy Catapult.

Energy Central is the UK's unique port-based service, investment and growth cluster for companies operating in the offshore energy, subsea, decommissioning, battery manufacturing and renewable energy markets.

## INWARD INVESTMENT

In 2024, the Port of Blyth and its partners have continued to drive significant investment in the region, contributing to the growth of the offshore energy cluster around the estuary.

A prime example of this success is the £130 million subsea cable manufacturing facility being developed by JDR Cables. Set to become the first facility in the UK capable of manufacturing high-voltage subsea cables, this project will meet the growing demands of the offshore energy sector. The construction of the site is progressing well, with the factory scheduled to begin operations in 2025.

With land still available across the estuary, Energy Central continues to attract interest from businesses spanning multiple sectors, including the confirmed development of one of Europe's largest datacentre sites on the north bank of the Estuary at Cambois. The Port will work closely with partners to support this development, including inbound/outbound logistics during the development and future cooperation over the use of AI applications.

In addition, the largest remaining development site in Northumberland at West Hartford is only 5 minutes from the Port's South Harbour Terminal. This 55 hectare site is therefore also available for port related uses from manufacturing to logistics and other uses linked to the clean energy cluster around the Blyth Estuary.



Archives JDR Cable Systems



## ENERGY CENTRAL CAMPUS

Energy Central Campus (ECC) is a unique partnership between the Port of Blyth, Northumberland County Council and the Offshore Renewable Energy Catapult, with a mission to create the pipeline of talent required for the expanding clean energy sector, at the same time, inspiring, training and delivering pathways to employment for the local community.

In 2024, phase one of ECC, Energy Central Learning Hub (ECLH), completed build and opened its doors to 80 plus learners at the start of the academic year. Facilities include specialist electrical and mechanical workshops, classrooms, major regional STEM hub, digital skills training facilities, an immersive Clean Energy Visitor Centre and conferencing and events space for up to 250 people. The ECLH is already home to three core tenants, including Bede Academy, Northumberland Skills and Port Training Services.

The campus has also secured significant partnerships with major employers in the clean energy space such as Equinor, RWE and JDR Cables.

The phase two of ECC, the Energy Central Institute, is planned to open in 2027, with the business case currently progressing through Regional Government approvals. The £20m+ development is a new higher-level skills and innovation facility, developing energy sector expertise at degree and PhD levels in partnership with the higher education sector including universities and colleges. The facility will offer undergraduate programs, internships, research projects, business coworking spaces, and CPD initiatives for both industry professionals and educators, fostering innovation and collaboration within the energy sector.



# THE FUTURE

Set against a backdrop of ongoing global economic challenges, the Port has continued its trajectory of growth, with a fourth year of excellent financial performance, and is determined to build on these strong foundations.



A significant factor in this sustained success has been the Port's position at the forefront of the offshore energy sector, in particular, it is well placed to support future offshore wind projects in the North Sea and beyond.

One key development strengthening this offshore cluster, is the new JDR Cable Systems manufacturing facility. Due for completion in 2025, this state-of-the-art cable factory will become an important long-term customer of the Port, further bolstering the Energy Central renewables cluster on the Blyth estuary. The nearby port related development site at West Hartford will also progress across 2025, providing valuable additional capacity for cargo that is suitable for movement on public roads.

However, this prominence as an offshore energy hub does not diminish the importance of other cargoes, and diversity of trade remains a key element of the ongoing strategy to ensure sustainability for the long term. The Port continues to grow a broad mix of cargoes, from container to dry bulks, liquid bulks and other general cargo. These will no doubt evolve over time with, for example, the potential to consider greener fuel cargoes as the economy looks towards decarbonisation.

Similarly, Transped, the Port's logistics subsidiary, is focussed on further growth, with a particular emphasis on broadening its project forwarding services. This in turn will strengthen the Port's One-Stop-Shop strategy, alongside Port Training Services, and further development of value-added services, such as engineering solutions and fabrication, to meet the evolving needs of the market.

Collaboration with Energy Central partners (Northumberland County Council, ORE Catapult, and Advance Northumberland) and the North East Combined Authority will also be key, ensuring the Port continues to play its part in economic growth and prosperity across the Region.

However, such growth will not be at the expense of the environment and the Port will continue with its strategy of decarbonisation towards Net Zero in 2040.

It will also continue to modernise and embrace latest technologies, ensuring the Port's services and facilities remain cutting edge. To this end the new private 5G Network, opened by Boldyn Networks in South Harbour during 2024, will provide opportunities for innovation and the use of AI technologies over the coming years.

As a Trust Port, the commitment to serving a broad range of stakeholders will also remain paramount. Profits will routinely be reinvested into improved facilities and services, ensuring that customers, employees and the community all benefit from the Port's success. A good example of this is the not-for-profit initiative, Energy Central Campus which will build on the successful completion of the Energy Central Learning

hub and move towards the planned second phase, the Energy Central Institute. Once completed, the ECC initiative will help to train the clean energy workforce of the future and be providing opportunities for training and employment to the wider community

In conclusion, the Port is confident that it is set for further growth and will make nationally significant contributions towards expansion of key sectors such as offshore wind. Despite an increasingly uncertain world, we will also work hard to ensure that our broad activities are ultimately for the benefit of all stakeholders, on a local, regional and national level.





# PORT OF BLYTH

Commissioners House, Wensleydale Terrace,  
Blyth, Northumberland, NE24 3DY

**Telephone:** 01670 357 000

**Email:** [comms@portofblyth.co.uk](mailto:comms@portofblyth.co.uk)