

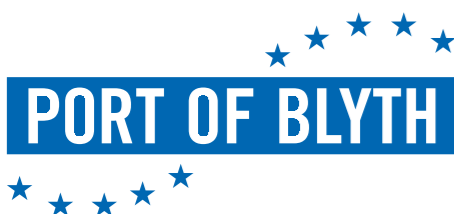
★ ★ ★ ★ ★
PORT OF BLYTH
★ ★ ★ ★ ★



ANNUAL REVIEW 2025

CONTENTS

CHAIR'S STATEMENT	03
CHIEF EXECUTIVE'S REVIEW	04
PORT OVERVIEW & STATUTE	05
CONSTITUTION & BOARD	06
FINANCE	10
PORT OPERATIONS & DEVELOPMENTS	12
FORWARDING & LOGISTICS	16
PEOPLE & CULTURE	18
25 YEARS IN OFFSHORE WIND	20
ENVIRONMENT & DECARBONISATION	22
SAFETY & TRAINING	24
STAKEHOLDERS & THE COMMUNITY	26
ENERGY CENTRAL	28
THE FUTURE	30



AS A TRUST PORT, OUR RESPONSIBILITY IS NOT ONLY TO DELIVER STRONG COMMERCIAL PERFORMANCE, BUT TO ENSURE THAT OUR SUCCESS GENERATES WIDER VALUE FOR THE COMMUNITY AND REGIONAL ECONOMY.

CHAIR'S STATEMENT

The Port of Blyth Group has delivered another year of strong performance in 2025, building on the progress made over recent years and continuing to demonstrate resilience in a challenging global economic environment. Turnover, excluding intercompany trading, reached £29 million, ahead of budget. This translated into an operating profit of £1.8 million and a pre-tax profit of £1.36 million, representing a positive financial outcome for the Group.

As in previous years, the Port's core operating business remained the principal driver of Group profitability and continues to provide the strong foundation on which our wider activities are built.

At the same time, it is important to recognise that our success is underpinned by a broader strategic approach. The Group continues to pursue its ambition of providing integrated, value-added services to the offshore energy and wider port-related sectors, ensuring that customers can access a comprehensive range of support through a single, trusted partner.

A key component of this "one stop shop" approach is our logistics and forwarding subsidiary, Transped, which provides global project forwarding capability and plays a vital role in sustaining trade through the Port. Transped continues to generate the majority of the cargo volumes on the regular container service between Blyth and the Netherlands, providing an important link to European markets. Although the business was impacted by ongoing pressures in the short sea container sector, Transped remained profitable, and the recent growth in its project forwarding activity is an encouraging sign of the strength of its wider service offering.

Investment remains essential to ensuring the Port continues to develop its infrastructure and capabilities. In 2025, capital expenditure totalled £4.5 million, supporting growth through improvements across the estate. Key projects included the purchase of cable reels, continued

infrastructure development, replacement and upgrade of plant and equipment, refurbishment of our historic former head office for a new tenant, and investment in new facilities including a new Harbour Master's office. Continued investment will help secure long-term benefits for both the community and the Port's commercial resilience and growth.

However, as a Trust Port, our responsibility is not only to deliver strong commercial performance, but to ensure that our success generates wider value for the community and regional economy.

The Port continued to play a significant role in the regional economic activity in 2025, working closely with our Energy Central partners, Northumberland County Council, the North East Combined Authority and other organisations to support the continued development of the clean energy cluster around the Blyth Estuary and beyond. Amongst other initiatives, one example is our involvement in the formation of the NE Ports Partnership, supporting a stronger and more coordinated approach to growth across the North East.

Alongside these economic benefits, we also remain committed to supporting local stakeholders and community initiatives. During 2025, we continued to assist a wide range of charities and community groups and were proud to deliver another record Christmas Appeal in support of Blyth Food Bank, supported by contributions from across the Energy Central cluster.

In closing, I would like to thank fellow Commissioners, our management and staff, and all partner organisations and stakeholders for their continued support and contribution throughout 2025.

Catherine Young
Chair



ALL THIS ACTIVITY REINFORCED THE PORT OF BLYTH'S POSITION AT THE HEART OF THE UK OFFSHORE WIND SUPPLY CHAIN, SUPPORTING NATIONALLY SIGNIFICANT PROJECTS THROUGH SPECIALIST INFRASTRUCTURE AND OPERATIONAL EXPERTISE.

CHIEF EXECUTIVE'S REVIEW

Port trade continued to strengthen in 2025, particularly our offshore energy related activities, resulting in another year of strong financial performance. Turnover from the Port operating business reached £20.29 million, with an operating profit of £1.77 million, both exceeding budgeted expectations.

Offshore wind remained the dominant driver, including activity linked to the Sofia Offshore Wind Farm Construction Base, with regular vessel calls throughout the year. This supplemented mobilisation/demobilisation and project work on behalf of key vessel operators and other tenants, who have established Port of Blyth as their base.

Cable storage and logistics has also been a significant part of a successful 2025, including the major mobilisation of both the Sofia and Inch Cape wind farms. In addition, the long-term storage of strategic cable spares for multiple clients continued to grow across the year, demonstrating the Port's specialist capability in this highly technical and expanding market.

All this activity reinforced the Port of Blyth's position at the heart of the UK offshore wind supply chain, supporting nationally significant projects through specialist infrastructure and operational expertise. It was fitting that this also coincided with the Port's 25th anniversary supporting offshore wind, with the first turbines in the UK installed off the coast of Blyth in 2000.

Alongside renewables, the Port also continued to support wider project work, including activity within the oil and gas sector, demonstrating the flexibility of our infrastructure and the breadth of expertise available across all operations.

In terms of other cargo, trading conditions in the short sea container market remained challenging, and container volumes were down on the UK/Netherlands service. However, regular services were maintained, and the

transition to Samskip as the new service operator, will provide a foundation for renewed growth in this sector.

Breakbulk cargo tonnage was up on 2024, albeit down on budget, consisting of Refuse-Derived Fuel, alongside smaller volumes of logs and metals. Dry bulk volumes eased slightly compared with the previous year, although long-standing trades in alumina, aggregates and cement continued to provide regular throughput.

Liquid bulk performance was up on 2024 and in line with budget, with marine fuels handled through the Geos facility at Bates Clean Energy Terminal continuing to provide an important service for vessels visiting the Port, particularly those supporting offshore energy operations. This terminal now services both berths at the terminal, enhancing flexibility and service levels.

In addition to cargo-related activity, other revenue streams continued to make an important contribution, particularly property income from tenants based within the Port, reflecting the continued growth of the Energy Central cluster around the Blyth Estuary. This revenue was supplemented by other activity not linked to cargo movements, including general warehousing, training, conservancy services and third-party terminal operations.

Last but by no means least, I would like to thank our dedicated workforce, who are the foundation of the exceptional service level that we have become renowned for. It is down to them that we have had another successful year and can look forward with optimism into 2026 and beyond.

Martin Lawlor OBE
Chief Executive



PORT OVERVIEW & STATUTE

As a statutory trust, Blyth Harbour Commission is responsible for conservancy and safe navigation on the River Blyth and operates for the benefit of all stakeholders, who include our employees, commercial and leisure port users, the local community and the regional and national economy.

A diverse board of six Commissioners, including the Chief Executive, oversees the strategic development of the Port and its subsidiaries, through bi-monthly meetings with executive management. A number of committees such as those convened for audit and pension scheme purposes, also operate and, together with an Annual Public Meeting, ensure on-going good governance.

Board members are selected for terms of three years with the Chair and Deputy Chair appointed by the Board.

The Port routinely re-invests profits in order to improve the facilities and services offered to all Port users, generating enhanced economic activity and community benefits. As a recognised major UK Trust Port, the Port of Blyth also liaises closely with both regional and national government to ensure that benefits are maximised to stakeholders as a whole.

During 2024, Blyth Harbour Commission (BHC) continued to fulfil these important

duties as well as operating a busy modern commercial port, with four main terminals and associated cargo handling services.

In addition to its main port business, BHC operates a wholly owned subsidiary Transped Ltd providing complementary port-related services. Transped is a well-established international logistics and forwarding company and plays an essential role in attracting trade through the Port.

Although not a separate legal entity, Blyth Harbour Commission also operates a training division, Port Training Services (PTS), offering award winning training provision on a nationwide basis. PTS also provide all in-house training ensuring a highly qualified workforce.

Appointments throughout the business are made adopting Nolan principles and best practice from Trust Port guidance, with candidates chosen for a range of skills to meet the needs of the business at any given time.

CONSTITUTION & BOARD

COMMISSIONERS



CATHERINE YOUNG
Chair

Catherine Young qualified as a chartered accountant with KPMG before going on to spend time both in practice and industry, including with PwC and Reg Vardy PLC.

Catherine has current roles in both commercial and not-for-profit businesses and has previously served in several other non-executive roles. These include as Senior Independent Director and Vice Chair at the North East Ambulance Service, as a Governor at the University of Sunderland and as Chair of Audit Committee at national charity Breast Cancer Care.

Catherine brings her experience in governance, board reporting and accountancy to her role as a Commissioner.

Catherine was appointed a Commissioner in 2015, Deputy Chair in 2022 and Chair in 2024.



PAUL HARDISTY
Deputy Chair

Paul has extensive operational and board experience in the Energy and Marine industries having worked for a number of global companies including GE Oil & Gas, Halliburton, Aker Solutions and Royal IHC.

During his career, he has spent significant time overseas developing and delivering opportunities which included extended periods in Australia, Norway, USA, Brazil, and the Netherlands.

Most recently, Paul was Managing Director of Royal IHC in the UK and the Executive Director of Royal IHC B.V with the responsibility for leading the group's capital equipment businesses.

Paul was appointed as a Commissioner in 2021, Deputy Chair in 2024 and is Chair of the Audit Committee.



MARTIN LAWLOR OBE
Chief Executive

Martin was appointed Chief Executive by Blyth Harbour Commission in 2006 having previously held the roles of Deputy Chief Executive and Commercial & Operations Director. He also acts as Chair of the commission's logistics subsidiary Transped.

Martin is a council member of the British Ports Association, having served as Chair between 2018 and 2021, a board director of Port Skills & Safety, Chair of regional flagship skills and education initiative, Energy Central Campus, and has held positions on a number of regional economic and strategic boards.

Having overseen the Port of Blyth's significant growth over recent years into one of the UK's largest Trust Ports, and contributed to the wider sector nationally, Martin was awarded an OBE for services to the Ports, Maritime and Offshore Energy Industry in 2024.

Martin was appointed Chief Executive and a Commissioner in 2006.



LUCY WINSKELL OBE LL
Commissioner

Lucy Winskell OBE is His Majesty's Lord-Lieutenant of the County of Tyne and Wear.

Previously Pro Vice-Chancellor (Employability & Partnerships) at Northumbria University, Lucy was a member of the Executive team after transitioning into higher education following a 28-year career as a litigation lawyer.

Lucy's non-executive career has been focused on economic growth and regeneration within the North East.

Lucy's regional roles have included Chair of the North East Local Enterprise Partnership; Chair of the North East Combined Authority; Board Member of the North East Regional Investment Fund and North East Access to Finance (both supporting SME growth); non-executive Director of Government Office North East; Chair of the North East Industrial Development Board; Board Member of ING; and Chair of Board, North East Chamber of Commerce.

Lucy is a strong advocate for the region at a national level. As a member of the Arts and Humanities Research Council, she highlighted the importance of the cultural and creative sector in a regional economy and as Vice Chair of the British Chambers of Commerce (BCC) she ensured a regional voice formed part of BCC's lobbying and policy work.

Lucy was appointed as a Commissioner in 2023.



RICHARD TURNER
Commissioner

Richard Turner is Chief Executive of Tekmar Group PLC, a global market leader in subsea cable, umbilical and flexible pipe protection systems.

Previously, Richard was Chief Executive of Geoquip Marine, Bel Valves & BEL Engineering, President and CEO of JDR Cables and member of the Offshore Wind Industry Council (OWIC). Prior to JDR, Richard worked for Technip Umbilical Systems, where he was Vice President of Global Manufacturing.

Earlier in his career Richard worked in the construction equipment industry with Komatsu and Terex. He has a Mechanical Engineering degree and an MBA from Durham University.

Richard was appointed as a Commissioner in 2021.



ANDREW MILLS
Commissioner

Andrew is CEO of ITS, a system integration company focused on regulated industries and also holds a number of non-executive and advisory positions.

Most relevant to the Port is his Chairmanship role at NOF, a UK wide business development membership organisation working in the energy sector, who also owns and operates Energi Coast.

Previously, Andrew was Chief Executive Officer of ITI, a UK wide technology company. Early in his career, Andrew qualified as a chartered engineer with Assystem, a global consultancy, engineering and project management company.

Andrew was appointed as a Commissioner in 2024.

All appointments are under the Blyth Harbour Revision (Constitution) Order 2004 ("the Order") which adopts the requirements contained within Ports Good Governance Guidance published by the DFT (March 2018) in respect of the recruitment, selection and Appointment/re-appointment of Commissioners.



EXECUTIVE MANAGEMENT



MARTIN LAWLOR OBE
Chief Executive

Martin was appointed Chief Executive by Blyth Harbour Commission in 2006 having previously held the roles of Deputy Chief Executive and Commercial & Operations Director. He also acts as Chair of the commission's logistics subsidiary Transped. Martin is a council member of the British Ports Association, having served as Chair between 2018 and 2021, a board director of Port Skills & Safety, Chair of regional flagship skills and education initiative, Energy Central Campus, and has held positions on a number of regional economic and strategic boards.



ALAN TODD
Port Director

Alan joined the Port in 2004 and as Port Director is responsible for overseeing the Operations and Engineering departments, as well as assisting the Commercial team on new customer opportunities. Having qualified as a Chartered Civil Engineer, Alan previously worked for Volker Stevin as a contracts manager and Corus as a specialist advisor in the construction of quay structures around the world.



ALASDAIR KERR
Commercial Director

Alasdair is an experienced commercial professional, who has worked in the Ports industry for over 20 years. Alasdair has used his breadth of market sector understanding to deliver record business growth and large-scale quayside infrastructure developments.

Alasdair joined the Port of Blyth in 2021 and has played a key role in the Port's development, welcoming new customers and driving up revenue for the Port and its subsidiaries.



EDWIN DICK
Harbour Master

Edwin has 28 years of experience in the marine industry, having begun his career at sea when he joined the Merchant Navy in 1997. He transitioned to the Port Sector in 2008, joining the Ports Marine Department in 2009 as a Pilot/Assistant Harbour Master and served as Deputy Harbour Master for six years, before being appointed Harbour Master in 2019.

In addition to his role as Harbour Master, Edwin is a Council Member of the UK Harbour Masters Association. He is also the Chair of both the North East Ports Group and the MNWB Tyne Port Welfare Committee.



ORAN ROBSON
Commission Secretary and Finance Director

Oran joined the Port in 2016 and as Commission Secretary and Finance Director is responsible for both Finance and IT operations. Oran qualified as a chartered accountant with EY before moving into industry and working for a number of listed organisations, including Rolls-Royce plc. Oran is also a director of both Transped and Energy Central Campus, as well as member of the British Ports Association's Finance Group. In addition, he is a Fellow of the Institute of Chartered Accountants.

PRINCIPAL OFFICERS

★ **M LAWLOR B.A. OBE**
Chief Executive

★ **A S TODD C.ENG. MICE**
Port Director

★ **E J DICK**
Harbour Master

★ **A KERR B.SC.**
Commercial Director

★ **O K H ROBSON B.SC. FCA**
Commission Secretary and Finance Director



FINANCE

The Port of Blyth delivered a strong performance in 2025, with port turnover exceeding £20 million for the third consecutive year, demonstrating continued resilience in a challenging economic environment.

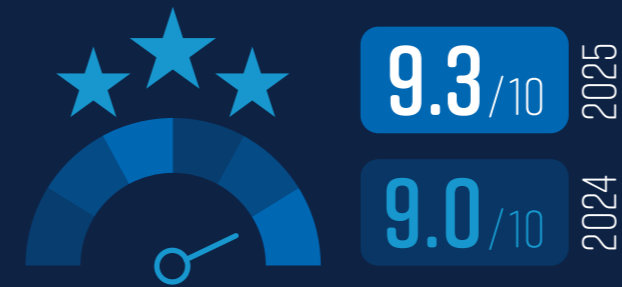
GROUP PERFORMANCE INDICATORS	2025	2024	2023	2022	2021
Turnover (£'000s)	29,066	31,477	31,521	30,413	25,517
EBITDA (£'000s)	6,022	6,435	7,114	6,426	4,601
Operating profit (£'000s)	1,802	2,646	3,883	3,670	2,132
Adjusted operating profit (£'000s)*	1,756	2,851	2,782	3,852	2,342
Profit before taxation (£'000s)	1,413	2,226	3,567	3,318	1,807
Adjusted profit before taxation (£'000s)*	1,367	2,431	2,466	3,500	2,017

PORT PERFORMANCE INDICATORS	2025	2024	2023	2022	2021
Turnover (£'000s)	20,286	22,230	21,548	19,190	14,939
Operating profit (£'000s)	1,766	2,260	3,725	3,285	1,624
Adjusted operating profit (£'000s)*	1,720	2,468	2,624	3,467	1,834
Profit before taxation (£'000s)	1,388	1,855	3,427	3,208	1,578
Adjusted profit before taxation (£'000s)*	1,342	2,063	2,326	3,390	1,788
Total throughput inc road / rail (tonnes)	449,000	485,000	553,000	607,000	700,000
Total throughput seaborne only (tonnes)	448,000	481,000	551,000	577,000	652,000
Customer service feedback (scale 1 to 10)	9.3	9.0	9.0	9.0	9.1
RIDDOR accident statistics (per 100 workers)	0.0	0.0	0.0	0.8	0.0

The above data is extracted from the Annual Report and Financial Statements approved by the Commissioners and upon which the auditors have provided an unqualified audit opinion for the years shown.

* Adjusted operating profit and adjusted profit before taxation are operating profit and profit before taxation excluding the impact of current and past service pension costs. As this is a non cash impact, which can be volatile from year to year, the Commissioners believe its exclusion presents a fairer presentation of performance.

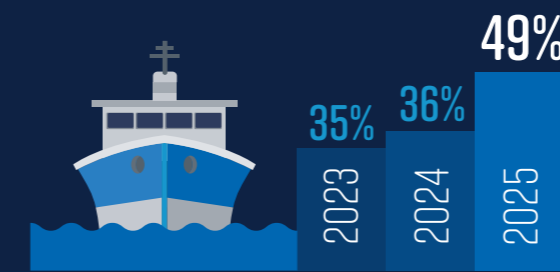
2025 AT A GLANCE



RECORD HIGH
CUSTOMER SERVICE
FEEDBACK SCORE



£20M+
PORT TURNOVER
THREE YEARS RUNNING



**OVERALL BERTH
UTILISATION
UP ON 2024**

25
CELEBRATED
25 YEARS
IN OFFSHORE WIND

90%+
OF TOTAL CONTAINER
VOLUMES CONTRIBUTED
BY TRANSPED

744
INDIVIDUALS
TRAINED
BY PTS

PORT OPERATIONS & DEVELOPMENTS



LANDSIDE

2025 was another strong year for operations at the Port of Blyth, with a wide range of vessels and cargoes handled across multiple sectors. Throughout the year, our marine and landside teams worked closely together to maintain high standards of service and operational efficiency across the Port. Their combined expertise and commitment have played a key role in supporting the Port's continued growth and success.

KEY PORT DEVELOPMENTS

Throughout 2025, the Port of Blyth continued to invest in its infrastructure, strengthening operational capabilities and supporting future growth.

A key highlight was the restoration of Port of Blyth's former Head Office, a Grade II listed building built in 1913, located at 79 Bridge Street in Blyth. Significant external repairs and a full internal refurbishment were carried out, with all works undertaken sympathetically to preserve the building's historic character. The building was modernised with new electrics throughout and the installation of air source heat pumps to improve energy efficiency. The project represented a £775k investment from the Port, matched by similar investment from tenant Harlyn, who relocated to the premises in January.

The Port has also progressed with the early design phase for the major expansion of its Battleship Wharf terminal, which will include the reclamation and infilling of three hectares of land, alongside capital dredging of the river, enhancing port capacity and accessibility to support the growth of the UK's offshore wind supply chain.

This work has been further boosted by £275,000 in match funding from The Crown Estate's £50m Supply Chain Accelerator Fund as well as additional support from both Northumberland County Council and the North East Combined Authority. This initial phase forms part of a wider vision that could see up to £100m invested in transforming Battleship Wharf into a future-ready terminal to support the next generation of offshore wind and low-carbon energy projects. The initial design phase of the project is expected to be completed in 2026.

In November 2025, a major maintenance project was completed on the East Pier, with structural repairs to the first internal wave trap near the lighthouse. Using 10 tonnes of Gunite concrete, the works filled voids and addressed areas of potential erosion, ensuring the pier remains safe and operational for years to come.

Operational efficiency and sustainability also remained a focus, with the addition of four new electric vans, a 3-tonne second-hand electric forklift, and two 7-tonne electric forklifts, supporting day-to-day operations while reinforcing the Port's commitment to low-emission, environmentally friendly technologies.

OFFSHORE ENERGY

The Port continued to provide extensive support for offshore wind developments and wider supply chain activity in 2025, underpinned by its flexible and responsive approach to operations.

Throughout the year, the Port has supported a range of major offshore projects, including export cable operations for the Inch Cape development, alongside ongoing vessel

activity and specialist scopes. This work reflects Blyth's capability to deliver efficient, end-to-end support for complex offshore projects.

Mobilisation activity remains a key area of expertise, with the Port delivering a high volume of complex vessel mobilisations. Notably, this included the deployment of one of the world's largest trenchers demonstrating Blyth's ability to handle technically demanding projects at scale.

The Port also continued to invest in its infrastructure and capabilities, enhancing its ability to support offshore energy clients through the expansion of its reel fleet, providing increased capacity for cable and flexible pipe storage and securing long-term contracts.

As the home of RWE's Sofia Offshore Wind Farm construction base, the Port of Blyth continued to play a vital role in one of the UK's flagship offshore wind developments, including the provision of ongoing cable storage and operational support.

In addition, the Port supported regular offshore energy vessel visits, ensuring quick turnarounds through 24/7 operations. Its responsive and adaptable approach enabled teams to meet client requirements and adjust plans as needed, further demonstrating the Port's practical, can-do attitude in delivering operations.

OTHER SECTORS

Throughout 2025, the Port of Blyth continued to demonstrate its versatility across multiple sectors. The Port supported decommissioning projects and handled a variety of bulk and aggregate cargoes, while also completing a major load-out of a power station control unit for TEXO. These operations reinforce the Port's reputation for safely and efficiently managing complex, high-value, and specialist cargoes.

'I am delighted that the Port of Blyth has been successful in securing support from The Crown Estate. This investment recognises our vision to make the North East the home of the green energy revolution and reflects the significant growth potential of our offshore sector.'

Kim McGuinness
North East Mayor



PORT OPERATIONS & DEVELOPMENTS

MARINE

The Port of Blyth maintained strong marine operations in 2025, supporting a wide range of vessels and cargoes across multiple sectors while continuing to uphold the highest standards of safety and compliance.



SAFETY & COMPLIANCE

The Port continues to operate to the highest standards of marine safety, maintaining full compliance with the Port Marine Safety Code (PMSC) and preparing the triennial compliance statement for the Marine Coastguard Agency (MCA) for 2026–2029.

Through a multi-agency incident exercise, the Port demonstrated its strong, cooperative relationships with regulatory bodies and emergency services, showing it is ready to respond effectively when needed. Ongoing Statutory Port Security Committee meetings and regular emergency exercises further strengthen adherence to the International Ship and Port Facility Security (ISPS) Code and ensure the Port's resilience in the face of any challenge.

49%
berth utilisation

785
pilotage acts,
third-highest on record

10,000+
VESSEL
MOVEMENTS

A record high
for the Port

2.0M
DEADWEIGHT
TONNAGE

Exceeded 2m tonnes for
the fifth consecutive year

815
COMBINED PILOTAGE
AND PEC ACTS

Maintained very high
levels of recent years



DREDGING & CONSERVANCY

During 2025, the Blyth Endeavour undertook a number of external dredging campaigns, while maintenance dredging within the Port removed approx. 3000 tonnes of material, which was safely deposited at a licensed disposal site. The Port also supported Advance Northumberland in the management of their capital dredging works at the approaches to the new NEP1 berth.

Alongside dredging activities, the Port continued to expand its marine capability following the 2024 acquisition of a trailer-based survey vessel, enabling the further development of in-house marine survey services.

In November, Trinity House carried out its annual inspection of the Port's Aids to Navigation, with no defects recorded, confirming the Port's continued compliance with its responsibilities as a Local Lighthouse Authority.

No marine pollution incidents were recorded during 2025, and the Port remains compliant with OPRC regulations, operating in accordance with the Port Oil Spill Contingency Plan.

298,000
tonnes of dredged material
removed during 2025

INFRASTRUCTURE & FLEET

Significant investments are enhancing the Port's operations and capabilities. A new Pilot Boat, expected in early 2027, and a modernised Harbour Master's office with upgraded navigational and vessel monitoring systems will strengthen safety and efficiency.

Meanwhile, ongoing mooring bollard testing across all operational berths ensures vessels can berth safely and gives customers confidence in safe and smooth operations.

MARINE LEADERSHIP & DEVELOPMENT

The Harbour Master strengthened the Port's regional influence through participation in the UK Harbour Masters' Association Council meetings alongside other regional committees.

The appointment of a new Deputy Harbour Master strengthened the team, enhancing operational capacity and the Port's ability to manage increasing demands.

FORWARDING & LOGISTICS

Supporting the Port's focus on offering a one-stop-shop service, Transped, Port of Blyth's international logistics subsidiary, played a key role in 2025 by delivering seamless multimodal logistics, to meet the needs of an expanding client base.



CONTAINER SERVICE

2025 was a year of change and growth for Transped, marked by a switch from its long-standing A2B service in Moerdijk to a new container service with established short-sea operator Samskip, with all cargo volumes moving to the new operator.

The move of the European destination to Rotterdam provides enhanced intermodal connectivity and opens access to a wider range of destinations that were previously less viable for both import and export cargo.

Through this partnership, Transped is now able to utilise Samskip's extensive multimodal network, creating a more diverse and flexible service offering for customers. This enhanced connectivity not only delivers a more cost-effective solution but also supports more sustainable and energy-efficient logistics.

Transped's bespoke super high cube container fleet continues to be a major success. With over 100 containers, Transped can safely transport cargo traditionally moved by road, providing a unique competitive advantage.

In addition, the continued presence of a dedicated sales representative in the Netherlands strengthens Transped's position in Europe and enhances support for its European customers.

EXPORT PACKING

Export Packing delivered a strong performance, supported by the Port of Blyth's investment in expanding its facilities in 2024. Increased awareness of Transped's packing capability strengthened relationships with in-port customers and regional engineering firms.

A key strength remains the ability to design bespoke packing and lining solutions tailored to individual cargoes, supporting effective shipment planning and optimal use of space, particularly for air freight movements.

15,000+
TEU containers
handled in 2025



During the year, Transped further developed its bespoke packing solutions and supplied specialist materials, including gel blankets and moisture control systems, to protect high-value and sensitive cargo.

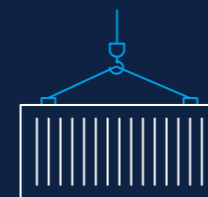
INTERMODAL TRANSPORT SOLUTIONS

Transped also continued to strengthen its position as a provider of integrated intermodal transport solutions, supporting customers with road, sea, air and rail transport on an international scale.

During the year, the team expanded its specialist capabilities in freight and project forwarding, handling complex and oversized cargo with advanced engineering and technical planning services. These capabilities enable clients to make informed strategic decisions around manufacturing, transportation, and project delivery, ensuring cargo is moved safely and efficiently.

Transped also played a key role in supporting major international energy and infrastructure projects across the oil & gas and renewable sectors, reinforcing its reputation for delivering complex logistics solutions in challenging environments.

At a regional level, Transped continues to work closely with local haulage partners, providing a flexible and responsive service while strengthening long-term relationships within the area. This ensures customers can receive efficient support at short notice.



DOOR-TO-DOOR CONTAINER SERVICE

Weekly Container service between Netherlands and Port of Blyth



EXPORT PACKING

Specialist packing solutions for industrial, offshore and high-value cargo



INTERMODAL TRANSPORT SOLUTIONS

Bespoke transport and handling of complex, oversized and heavy-lift cargo worldwide

PEOPLE & CULTURE



PEOPLE

The Port's greatest asset is its people, who consistently go above and beyond to deliver exceptional service to its customers and wide range of stakeholders. Customer feedback regularly highlights the workforce as a key point of difference, particularly in enabling efficient project delivery and responsive turnaround times.

In 2025, this was further strengthened by the appointment of a Deputy Harbour Master, who joined the marine team in June, enhancing the team's expertise and capability.

HEALTH & WELLBEING

Port of Blyth continued to prioritise employee health and wellbeing throughout the year, reinforcing a supportive workplace culture and initiatives that promote mental and physical health across the organisation.

Recognising that wellbeing is also closely linked to feeling valued and supported at work, the Port introduced the **Harbour Heroes** employee reward scheme in 2025. The scheme provides an opportunity for both employees and managers to nominate colleagues who have demonstrated one of the Port's core values in their day-to-day

work to receive a voucher in recognition of their contribution, reinforcing a positive, supportive and engaged workplace culture.

Following the discontinuation of the Better Health at Work Award for Northumberland and Tyneside in May 2025, the Port joined the North East Combined Authority's SHINE employer accreditation scheme, achieving Foundation status in September 2025. This recognition highlights the Port's continued commitment to a safe and supportive workplace and provides valuable opportunities to collaborate with other regional employers.

Building on this progress, the Port of Blyth aims to achieve SHINE Intermediate accreditation in 2026.

WORKFORCE COMMITMENT

Throughout the year, the Port of Blyth continued to record very low rates of employee absence and staff turnover, highlighting the strong engagement and resilience of our team.

This performance reflects our ongoing commitment to providing a safe, supportive workplace that prioritises the health, safety, and overall well-being of all staff at the Port.

"From the gate security all the way to the senior management, the Port of Blyth team understand the needs of our business and are always available to help. Their support plays a key role in ensuring smooth, safe and efficient port calls, and I would therefore highly recommend the Port of Blyth as both a homeport for a support vessel or a mobilisation/demobilisation port for more complex projects."

Vessel Superintendent,
Acta Centaurus



Jeff Walker pictured with Alan Todd on his last working day at Port of Blyth.



LONG SERVICE AWARD

The Port of Blyth proudly recognised the exceptional loyalty and contribution of two long-serving colleagues through its Long Service Awards, each celebrating 20 years of dedicated service in 2025.

In addition, the Port also acknowledged the retirement of Jeff Walker, who concluded 47 years of service. His experience and dedication over many years were highly valued and contributed to the Port's continued operations.



The Port of Blyth's original mission and vision were shaped at a pivotal moment for the offshore renewable energy sector. As the market has evolved, so too has the Port's ambition.

The refreshed vision reflects its role across a wider range of Port related sectors, positioning the business as an integrated provider of safe, secure and value-added services. It reaffirms a clear commitment to sustainable growth and the delivery of long-term economic and social value.



OUR MISSION

TO PROVIDE VALUE-ADDED, SAFE AND SECURE SERVICES TO OUR CUSTOMERS AND WIDER STAKEHOLDERS, MAXIMISING BOTH ECONOMIC AND SOCIAL VALUE.



OUR VISION

TO BE WIDELY RECOGNISED AS A NATIONALLY SIGNIFICANT AND SUCCESSFUL TRUST PORT, AT THE FOREFRONT OF SUPPORTING THE OFFSHORE ENERGY AND OTHER PORT-RELATED SECTORS.



OUR VALUES



A SAFE ENVIRONMENT FOR ALL



BUILT ON TRUST



DELIVERING A HIGH QUALITY SERVICE



WORKING AS ONE TEAM



GOING ABOVE AND BEYOND

25 YEARS IN OFFSHORE WIND

In 2025, the Port of Blyth celebrated a major milestone, marking 25 years of involvement in the offshore wind sector. As the home of the UK's first demonstration offshore wind farm, installed in 2000, the Port played a central role in the industry's development, contributing to the growth of the sector and supporting the transition to renewable energy in the UK and beyond.



The Port's history in the wind sector began in 1993, when Blyth Harbour Wind Farm—the first in the UK in a 'marine environment'—was established. This pioneering project featured nine 0.3 MW turbines on the East Pier, marking the start of the Port's journey in renewable energy.

In December 2000, the Port made history by hosting the UK's first offshore wind turbines. The Blyth Offshore Demonstrator wind farm initially consisted of two 2 MW Vestas turbines with a 66m rotor diameter, which at the time were the largest turbines installed offshore in the world.

These milestones laid the foundation for the Port's reputation as a leading hub for renewable energy. Over the past 25 years, the Port has supported a diverse range of offshore wind operations and provided world-class infrastructure and services to help grow the sector.

The Port of Blyth has continued to support some of the largest offshore wind farm projects globally and is home to Energy Central, a mature supply chain of over 50 companies serving the offshore wind sector. Through the Energy Central Campus (ECC), the Port has also nurtured the next generation of clean energy workers, ensuring a skilled workforce for the future of renewable energy in the UK and beyond.

"The Port of Blyth has been at the forefront of the offshore wind industry for 25 years. This campaign not only celebrated our pioneering past but also underscored our ongoing commitment to advancing the UK's renewable energy transition and supporting the continued growth of the offshore wind sector."

Martin Lawlor OBE,
Chief Executive of the Port of Blyth

KEY MILESTONES

★ 1993 PIONEERING START

FIRST UK MARINE WIND FARM INSTALLED AT BLYTH HARBOUR.

★ 2000 OFFSHORE FIRSTS

UK'S FIRST OFFSHORE WIND TURBINES; WORLD'S LARGEST AT THE TIME.

★ 2002 NAREC ESTABLISHED

OFFSHORE RENEWABLE ENERGY TESTING FACILITY ESTABLISHED IN BLYTH

★ 2008 REPOWERING MILESTONE

ORIGINAL TURBINES REPLACED WITH LARGER 3.4 MW UNIT.

★ 2013 INNOVATION HUB

ORE CATAPULT ESTABLISHED AS UK'S LEADING OFFSHORE WIND INNOVATION CENTRE.

★ 2015 WORLD-CLASS TESTING

BLADE TESTING FACILITY OPENS FOR TURBINES UP TO 100 M LONG.

★ 2020 PROJECT MOBILISATION BASE

SUPPORTED MAJOR OFFSHORE PROJECTS INCLUDING NEART NA GAOITHE.

★ 2024 WORKFORCE & TRAINING

ENERGY CENTRAL LEARNING HUB OPENS, NURTURING THE NEXT GENERATION OF CLEAN ENERGY WORKERS.

★ 2025 25 YEARS IN OFFSHORE WIND

THROUGHOUT 2025, THE PORT MARKED ITS OFFSHORE WIND MILESTONE BY ENGAGING WITH STAKEHOLDERS AND THE COMMUNITY, REFLECTING ON ITS ACHIEVEMENTS OVER THE PAST 25 YEARS AND LOOKING AHEAD TO ITS CONTINUED ROLE AS A LEADING HUB FOR RENEWABLE ENERGY.

ENVIRONMENT & DECARBONISATION

ENVIRONMENT

Environmental stewardship remains a core priority for the Port of Blyth, with continued focus on responsible operations, protection of the marine environment and strong environmental governance across the port. The Port has been instrumental in the growth of Green Trade, playing an important role in facilitating renewable energy and low-carbon supply chains, particularly through its work with the offshore wind sector and wider energy transition activities.

The Port operates within and alongside environmentally significant areas, including a Marine Conservation Zone, Sites of Special Scientific Interest (SSSI) and Special Protection Areas (SPA), and works to ensure its activities protect these important habitats and species. Partnerships with organisations such as the RSPB and Groundwork North East support conservation initiatives and wider environmental engagement. The Port's approach is guided by a comprehensive Environmental Policy and supported by recognised accreditations, including ISO 14001, providing a structured framework for environmental management and continuous improvement while enabling the Port to support sustainable trade and responsible growth.



DECARBONISATION

Port of Blyth continues to make considerable progress in delivering more sustainable operations to support the UK's transition to clean energy and the Port's Net Zero 2040 target. A structured, data-driven decarbonisation strategy has been developed, aligned with ESG principles, ISO 14001 standards, and industry climate objectives.

LIMITATIONS

Scope 3 emissions are difficult to calculate as they include emissions from an organisation's entire supply chain for goods and services. Where this data is reasonably accessible it is being collected but not yet reported publicly. The Port is part of a British Ports Association steering group, which is seeking to standardise methodology for calculating Scope 3 emissions and therefore, extended reporting may become feasible in the future.

CARBON REDUCTIONS

Overall reduction of 22.5% in carbon emissions generated from Port activities in 2025.

This is a result of:

- Continued transition to low-emission operations through electrification of fleet and cargo handling equipment.
- Generation of renewable electricity from the Port's solar PV installation.
- Reduction in fuel and gas consumption across Port sites.

WORKFORCE ENGAGEMENT

Employee engagement initiatives during the year included targeted environmental awareness campaigns promoting energy efficiency, recycling and low-carbon transport, alongside the introduction of a salary sacrifice scheme to encourage the uptake of electric vehicles.

Scoping our emissions



SCOPE 1

Scope 1 (direct) emissions produced on-site by fossil fuel combustion, mainly by cranes, internal movement vehicles/plant (including marine pilot boats) and gas/oil heating systems.



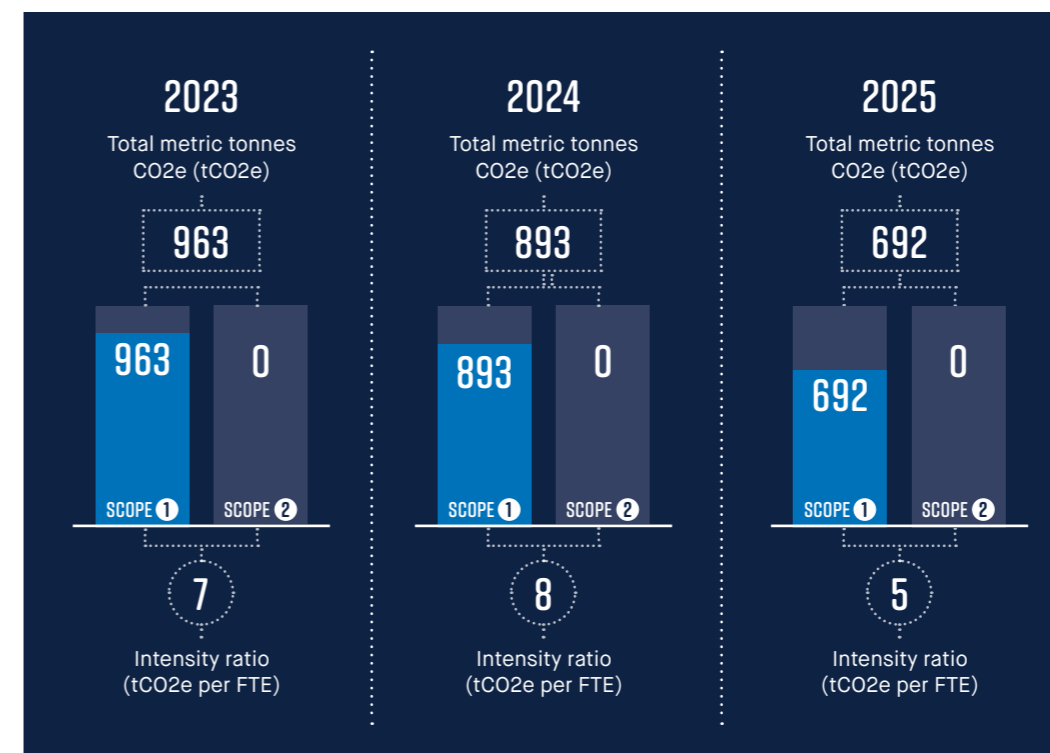
SCOPE 2

Scope 2 (indirect) emissions embedded within the energy the Port consumes that are not generated on-site. Indirect emissions are typically associated with electricity used to power buildings, workshops, quayside cranes, warehouses and electric plant and fleet vehicles.



SCOPE 3

Scope 3 (other indirect) emissions include transport by third parties, such as logistics and distribution companies, (including Transped) employees undertaking business and commuting travel and waste collection and processing data.



Over the next 12 months, we are focused on:



FORMAL DECARBONISATION STRATEGY

The Port will finalise and implement the Port's Decarbonisation Strategy and Net Zero roadmap, establishing clear, measurable milestones and transition pathways to achieve Net Zero emissions by 2040.



ELECTRIFICATION REPLACEMENT SCHEME

Continued transition to low-emission operations through electrification of fleet and cargo handling equipment in line with the 15-year transition to fully electric or hybrid operations by 2040.



ENERGY EFFICIENT INFRASTRUCTURE

Expand solar PV across new and refurbished buildings where feasible, while assessing opportunities for wind energy and battery storage to improve energy resilience and reduce Scope 2 emissions.



EMPLOYEE ENGAGEMENT

Strengthen internal engagement and environmental awareness by promoting the Port's decarbonisation strategy and Net Zero 2040 goal through targeted workforce communication, training, and behaviour-change campaigns.

SAFETY & TRAINING

HEALTH AND SAFETY

In 2025, safety remained a fundamental priority at the Port of Blyth, with a continued focus on protecting employees, customers and the wider community.

The Port's commitment to maintaining the highest safety standards across all operations continued throughout the year, with employees completing a range of specialist training, including Rescue from Height and crane training, to ensure they have the knowledge and skills required to carry out operations safely.

In addition, the Port of Blyth successfully maintained its ISO 45001 Health & Safety certification during 2025, further demonstrating the Port of Blyth's strong safety culture and its position among the UK's leading ports for health and safety performance. To further strengthen the team, a dedicated Health & Safety Advisor was appointed, enhancing in-house expertise and capacity to maintain and improve safety standards across all operations.

Beyond the Port itself, the team continued to support improvements across the wider UK ports sector through active involvement with Port Skills and Safety (PSS), the UK's professional safety and skills membership organisation for ports. Port of Blyth's Chief Executive sits on the PSS board, contributing to best practice and the development of higher safety standards across the industry.



Port of Blyth's HR and Safety Manager has also worked closely with PSS on reviewing and developing key guidance, helping shape national guidance while supporting sector-wide improvements.

In terms of quality, the Port underwent a series of rigorous internal and external audits, ensuring operations continued to meet the highest standards of safety and performance. Customer feedback also remained extremely positive, with an overall satisfaction score of 9.3 out of 10, reflecting the Port's commitment to quality, reliability and continuous improvement in the services and facilities we provide to our customers.

9.3 OUT OF 10
Customer satisfaction score

LOWEST
Accident rate since 2021

99%
of incidents reported within 24 hours

Jamie Edwards of Equinor receiving his Port Operative apprenticeship completion certificates



744
People trained in 2025

50
Port Operative apprentices graduated

TRAINING

Port Training Services (PTS), the training division of the Port of Blyth, delivered another busy and positive year in 2025, supporting a range of sectors including heavy industry, offshore energy and the ports sector. Through a wide range of products and services, PTS continued to equip delegates with the knowledge, skills and training required to operate safely and competently.

In 2025, 50 learners based at ports across the UK graduated from the Port Operative Apprenticeship programme, including participants from the Ports of Tyne, Sunderland, Liverpool, Berwick and ABP to name a few. Many of these apprentices

have since secured full-time employment within their respective ports, with several organisations already planning to recruit the next cohort, helping to develop the next generation of port professionals.

To strengthen its training provision, PTS relocated its dedicated training centre to larger facilities within the Port's South Harbour terminal, expanding its footprint from 500sqm to 800sqm. The new facility includes dedicated areas for forklift truck training, overhead crane training, mobile elevated work platform training and a new wind turbine blade training area, enhancing the organisation's ability to meet growing industry demand.

Commercial training activity also continued to grow in 2025, with PTS building on its established delivery of the GWO Slinger Signaller course and collaborating with a range of training providers to further strengthen the Port's position as a centre of excellence for offshore wind training. Several of these partners have now expanded their facilities into the Port's South Harbour terminal, further broadening the scope and accessibility of training provision for the sector.

800sqm
New expanded training facility

During the year, PTS further strengthened its internal capability through team development and the expansion of its instructor base, ensuring the organisation continues to deliver high-quality training across both port operations and commercial courses.

PTS also continued to support the development of future talent through its work with Energy Central Campus, facilitating student placements from the Energy Central Learning Hub and helping guide learners towards careers in industry.

STAKEHOLDERS & THE COMMUNITY

In 2025, the Port maintained strong, active engagement with a diverse range of stakeholders on a local, regional, national, and international basis. This involved close collaboration with employees, commercial and leisure port users, government bodies, the local community, and numerous other key groups identified through the Port's annual stakeholder mapping process.



Community Photography Competition Winner: Bates Clean Energy Terminal by Richard Turnbull

Throughout the year the Port engaged with Secretaries of State, Ministers, regional MPs and local Councillors on a range of matters affecting both the Port and the wider sector. In addition, the Port liaised with the North East Mayor, Kim McGuinness, to explore opportunities for growth in Blyth and across the region, including green investment initiatives. One of which is the "North East Ports" partnership which was formalised through the Memorandum of Understanding (MOU) signed between the region's major transport and logistics hubs—Port of



Blyth, Port of Tyne, Port of Sunderland, and Newcastle Airport. The Partnership aims to strengthen global connectivity, drive investment, accelerate the transition to a net-zero economy, and raise the North East's profile as a world-leading hub for sustainable trade and innovation.

Our Annual Community Photography Competition was a success, attracting over 500 fantastic entries capturing the unique character of Blyth's coastline, the busy Port terminals, and the River Blyth throughout the seasons.

Richard Turnbull's image, Bates Clean Energy Terminal, was chosen as the winner overall for its serene composition and dramatic contrast of light and shadow, showcasing both the industrial strength and environmental focus of the Port.

LOCAL COMMUNITY

The Port recognises its responsibility to the local community, not only as a driver of economic benefit but also as a considerate and responsible neighbour. During the year, the Port held meetings for residents and port users, providing an opportunity to share updates on Port activities and to address any concerns raised.

Alongside this, the Port continued to demonstrate its commitment to the local community through its community support programme, focused on enhancing health and wellbeing in Blyth, preserving maritime heritage, fostering community growth, and promoting sustainability. The funding provided empowered Worley's World CIC to deliver essential mental health resources for families in Blyth, while the Voices in Unity initiative celebrated cultural diversity and inclusion via community events and creative workshops, building cohesion and mutual understanding. Local sports clubs, including cricket and football teams, received sponsorships that fuelled player development, facility improvements, and broader community engagement. The

Port also championed health and safety education through programs like Sand Hoppers, enhancing children's fitness and water awareness, alongside supporting the Adaptive Ocean Academy's mission to make surfing accessible for all.

SPONSORSHIP

The Port continued its long-standing partnership with Blyth Spartans AFC, sponsoring the club's main stand and becoming the official front-of-shirt sponsor for the 2025/26 season. This marks the first time the Port's logo appears on the club's iconic green and white striped shirts, featuring on both the home and away kits of the men's team. In addition, the logo of the Port's award-winning training division, Port Training Services, features on the home and away shirts of the newly established women's team. The Port also sponsored Blyth Town FC during the year, further reinforcing its commitment to grassroots sports.



SUPPORTING BLYTH

A record-breaking Christmas Appeal was delivered in support of Blyth Foodbank and Operation Elf, uniting employees, partners and the wider community in a shared effort to give back.

The campaign achieved unprecedented levels of fundraising and gift donations, helping ensure more local families experienced the magic of Christmas.

Record-breaking donations to Blyth Foodbank and Operation Elf



ENERGY CENTRAL



Blyth is home to the influential Energy Central partnership which includes the Port of Blyth alongside Northumberland County Council, Advance Northumberland and the Offshore Renewable Energy Catapult.

Energy Central is the UK's unique port-based service, investment and growth cluster for companies operating across clean energy industries.



JDR Cable Factory Cambois

INWARD INVESTMENT

During 2025, ongoing investment has continued to enhance the offshore energy cluster around the estuary, supported by the Port of Blyth and its partners.

A standout development is the £130 million JDR Cable Systems subsea cable manufacturing facility in Cambois. Scheduled to begin production in early 2026, this facility represents a significant milestone, creating long-term opportunities and reinforcing Energy Central's position as an internationally recognised hub for clean energy.

Momentum across Energy Central remains strong, attracting investment from diverse sectors. Land across the estuary continues to draw interest from businesses, including the AI data centre campus at Cambois by QTS. Backed by significant investment,

the campus will deliver large-scale AI compute capacity, positioning the region as one of Europe's leading data centre hubs, unlocking up to £30 billion in economic value and supporting thousands of skilled jobs. This digital expansion complements Energy Central's offshore wind capabilities, enabling innovations such as digital twinning, predictive maintenance, and optimisation of renewable assets.

Looking ahead, major infrastructure developments at South Harbour and Battleship Wharf from 2027 will expand the Port's capabilities and attract new businesses across the clean energy sector. Further reinforcing growth, the near-port site at West Hartford, developed by Arlington, provides additional space for port-related industries, supporting expansion and inward investment.

PARTNERSHIP

Energy Central continues to strengthen the Port of Blyth's role as a leading hub for the offshore energy sector by fostering collaboration and creating opportunities for businesses across the supply chain. Through regular breakfast briefings, targeted mailers, and networking events, Energy Central keeps companies informed, engaged, and connected to upcoming projects.

The supply chain of over 50 companies means that complex offshore projects can be delivered efficiently, leveraging the expertise of companies based around the estuary providing a seamless service to customers. The success of many of these companies has also supported further investment in port facilities, with companies and port infrastructure growing and expanding together to enable new projects and continued investment in Blyth.



ENERGY CENTRAL CAMPUS

Energy Central Campus (ECC) is a unique partnership between the Port of Blyth, Northumberland County Council and the Offshore Renewable Energy Catapult, with a mission to create the pipeline of talent required for the expanding clean energy sector, at the same time, inspiring, training and delivering pathways to employment for the local community. In 2025, ECC continued to work with its established network of industry sponsors, maintaining strong connections with major clean energy employers such as Equinor, RWE, and JDR Cables.

Osbit Headquarters Blyth Opened in 2025



Since opening, the Energy Central Learning Hub (ECLH) has welcomed over 1,200 learners onto formal qualifications and engaged more than 4,000 young people in STEM activities. The £15 million+ STEM and vocational training facility provides specialist workshops, classrooms, flexible event space and an immersive clean energy room, with the full Clean Energy Visitor Centre scheduled to open in 2026. Officially opened in 2025 by the Secretary of State for Education, ECLH has gone on to host major regional and industry events and is home to tenants including Bede Academy, Northumberland Skills and Port Training Services.

Phase two, the Energy Central Institute, is progressing as a flagship regional project, with planning, approvals, and funding secured to deliver energy sector expertise at degree and PhD levels. Construction is scheduled to begin in mid-2026, following site preparation, with the main contractor appointed. In partnership with Newcastle and Durham Universities as well as the Offshore Renewable Energy Catapult, the Institute will provide higher-level skills development, applied research, and professional development initiatives, strengthening collaboration, innovation, and capability across the energy sector.



THE FUTURE

With the Port's strong financial performance continuing throughout 2025, it has a solid foundation from which to further develop its capabilities, support customers, and contribute to the wider regional economy.

The offshore renewables sector will remain central to future growth. The Port is well positioned to support upcoming offshore wind developments, including opportunities arising from the latest North Sea leasing rounds. Continued government commitment to offshore wind and the wider energy transition provides confidence that demand for the Port's facilities and expertise will remain strong. In parallel, the commencement of production at the JDR Cable Systems facility in early 2026 will mark a significant milestone, creating long-term opportunities and further strengthening Energy Central as an internationally recognised cluster for clean energy.

A key element of the Port's long-term strategy is the delivery of major infrastructure developments at South Harbour and Battleship Wharf from 2027 onwards. These projects will enable the reclamation of substantial areas of land from the estuary and accommodate larger vessels, significantly enhancing capacity and capability. Complementing this, the development of the near-port site at West Hartford by Arlington will provide additional space for port-related industries, supporting expansion and reinforcing the wider industrial cluster. Together, these investments will help future-proof activity and growth around the estuary.

Alongside infrastructure investment, the Port will continue to expand its range of value-added services, including handling, storage, fabrication, engineering solutions, and integrated logistics. The full integration of Transped into a cohesive "one-stop-shop" offering during 2026 will enhance the customer experience and support the delivery of increasingly complex projects. At the same time, Port Training Services will continue to grow, with an increased focus on offshore wind and specialist training, alongside the expansion of port-related apprenticeships across the UK.

While the clean energy sector presents significant opportunities, maintaining a diverse cargo base remains essential to long-term resilience. The Port will therefore continue to support a broad mix of trades, including dry bulks, liquid bulks (with future potential in green fuels), breakbulk, and general cargo. The transition of the Dutch/UK short sea container service to new ownership in early 2026 also presents an opportunity to work collaboratively to ensure its continued growth and long-term sustainability.

Working collaboratively with the Port's wider stakeholders will remain a key priority. Through partnerships with regional and local government, Energy Central, and initiatives such as the recently launched North East Ports collaboration, the Port will continue to drive economic growth, inward investment, and job creation. In addition, the Port of Blyth will continue to support the development of Energy Central Campus, including the proposed next phase, the Energy Central Institute, during 2026–27, further strengthening the pipeline of skills needed for the clean energy sector and the wider economy.

Alongside these growth ambitions, the Port remains committed to sustainable development, including progress towards Net Zero by 2040. This will involve further electrification of operations and increased renewable energy generation.

In conclusion, despite ongoing global economic and political uncertainty, the Port remains confident in its future and committed to delivering long-term value as a Trust Port, reinvesting in its facilities and services for the benefit of all stakeholders.





PORT OF BLYTH

Commissioners House, Wensleydale Terrace,
Blyth, Northumberland, NE24 3DY

Telephone: 01670 357 000

Email: comms@portofblyth.co.uk